



RC2-230V, RC2-AUS, ARC8-230V and ARC8-AUS
WiFi Smart Controller
User Manual



EN	ENGLISH	Pg 2
ES	ESPAÑOL	Pg 5
FR	FRANÇAIS	Pg 8
DE	DEUTSCH	Pg 11
IT	ITALIANO	Pg 14
PL	POLSKIE	Pg 17
RU	РУССКИЙ	Pg 20
PT	PORTUGUÊS	Pg 23
TU	TÜRK	Pg 26
CN	汉语	Pg 29
AR	العربية	Pg 32
NL	NEDERLANDS	Pg 35
IW	עברית	Pg 38
CS	ČEŠTINA	Pg 41



WiFi Smart Controller User Manual

Feature	Description
Maximum zones	8
Automatic programs	3
Start times per program	4
Custom run days	Yes
Master valve control	Yes
Rain delay	Yes
Rain/freeze sensor control	Yes
Seasonal adjust	Yes
Manual zone run	Yes
Manual program run	Yes
Manual test all zones	Yes
Zone advance	Yes
Built-in WiFi	Yes
AP Hotspot	Yes

Installation

If You're Replacing an Existing Controller

1. Take a photo of the wiring details, which will be useful to reference when installing the new controller.
2. Unplug the power cord from the AC power outlet and disconnect wires from the controller.

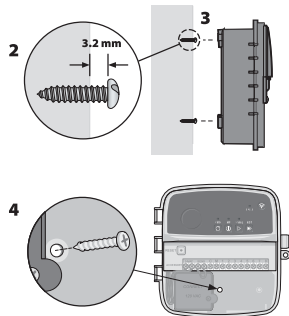
Mount New Controller

1. Choose a mounting location on a wall at least 4.5 m away from major appliances or air conditioners. Ensure an AC power outlet is within close proximity to mounting location.

WARNING

Install the controller with the power supply cord exit side pointing downwards to avoid ingress of water.

2. Drive a mounting screw into the wall, leaving a 3.2 mm gap between the screw head and the wall surface (use supplied wall anchors if necessary).
3. Locate the keyhole slot on back of the controller and hang it securely on the mounting screw.
4. Remove the wire bay cover on the lower part of the controller and drive a second screw through the open hole and into the wall (use supplied wall anchors if necessary).



Connect Valve Wiring

1. With the wire bay cover removed, route all field wires through the opening at the bottom of the controller.

WARNING

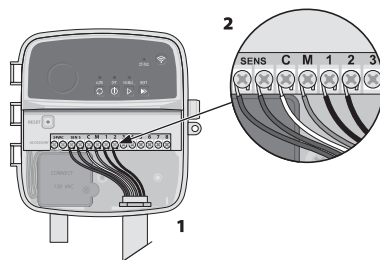
DO NOT route valve wires through the same opening as power wires.

2. Connect one wire from each valve to one of the numbered zone terminals (1–8) on the controller.

NOTICE

DO NOT connect more than one valve to the same zone terminal (1–8).

3. Connect a field common wire to the common terminal (C) on the controller.
4. For connection of optional accessories (rain or rain/freezing sensor, master valve, pump start relay), refer to the appropriate section within this manual.



Connect Fixed Wiring

WARNING

- Ensure that AC power is disconnected before replacing wiring.
- The installation must prevent the connection to be strained.
- When using fixed wiring to main supply, the installation must incorporate a disconnection device.
- DO NOT apply power until you have completed and checked all wiring connections.
- DO NOT attempt to link two or more controllers together using a single transformer.

1. FOR MODEL RC2-AUS, ARC8-AUS and ARC8-230V: If desired, the provided power cord can be removed and replaced with custom wiring.
2. Remove the wire bay cover on the lower part of the controller.
3. Locate the transformer box in the left-hand corner of the wire bay and unscrew the wiring compartment cover.
4. FOR MODEL RC2-AUS, ARC8-AUS and ARC8-230V: Unscrew the terminal block connecting the AC power cord and the transformer wires. Remove the power cord wires from the transformer box.
5. FOR MODEL RC2-AUS, ARC8-AUS and ARC8-230V: Remove the factory installed power cord by loosening the liquid tight cord connector.
6. Route the three wires from an external power source into the wiring compartment.
7. Connect the external power supply wires using the terminal block and resecure the liquid tight cord connector or a means of strain-relief of connections.

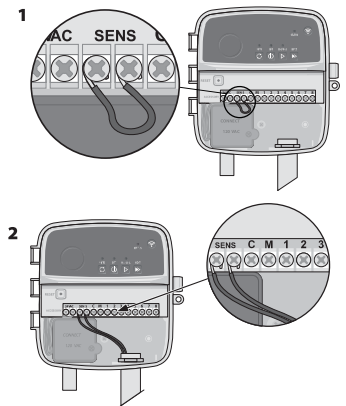
Power Wiring Connections 230 V_~

- Brown supply wire (live) to the brown transformer wire.
- Blue supply wire (neutral) to the blue transformer wire.
- Green/yellow supply wire (ground) to green/yellow transformer wire.

Connect Rain/Freeze Sensor (optional)

NOTICE

- DO NOT remove the jumper wire unless connecting a rain or rain/freezing sensor. The controller will not function if the jumper wire is removed and a rain or rain/freezing sensor is not connected.
- Rain Bird controllers are only compatible with normally closed rain or rain/freezing sensors.
- Check local and/or state regulations to determine if a rain or rain/freezing sensor is required.



1. Remove the yellow jumper wire from the SENS terminals on the controller.
2. Connect both rain or rain/freezing sensor wires to the SENS terminals.
3. For detailed installation and operation of rain or rain/freezing sensor, refer to sensor manufacturer's installation instructions.

Connect Master Valve (optional)

WARNING

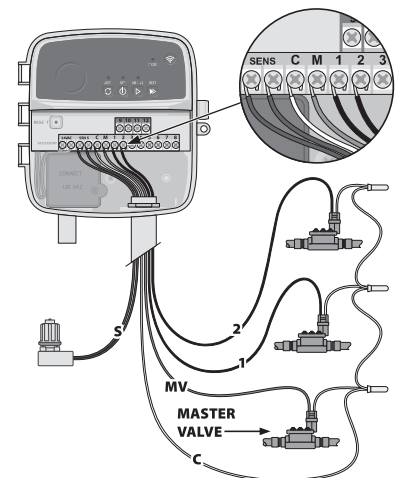
DO NOT route the master valve wires through the same opening as the power wires.

1. Using a direct burial cable, connect one of the wires from the master valve to the master valve terminal (M).

NOTICE

DO NOT connect more than one valve to the master valve terminal (M).

2. Connect the remaining wire from the master valve to the common terminal (C).



Connect Pump Start Relay (optional)

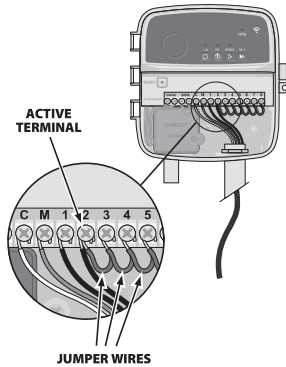
⚠ WARNING

DO NOT route the pump start relay wires through the same opening as the power wires.

NOTICE

- A pump start relay connects to the controller in the same way as a master valve, but connects differently at the water source.
- This controller DOES NOT provide power for a pump. A relay must be wired according to pump manufacturer's installation instructions.

1. Using a direct burial cable, connect one of the wires from the pump start relay to the master valve terminal (M).
2. Connect the remaining wire from the pump start relay to the common terminal (C).
3. To avoid possible pump damage in the event run times are assigned to unused zones, connect a short jumper wire from all unused zone terminals to the nearest zone terminal in use.
4. For detailed installation and operation of pump start relay, refer to pump manufacturer's installation instructions.



Connect Power

- The controller can be installed indoors or outdoors (if plugged into a weatherproof external outlet).
- The controller has an internal transformer that reduces supply voltage from 230 V_~ to 24 V_~. You will need to connect power supply wires to the transformer's three wires (live, neutral, ground). Refer to "Connect Fixed Wiring" section for installation details.

⚠ WARNING

- Electric shock can cause severe injury or death. Ensure power supply is turned OFF before connecting power wires.
- DO NOT plug in or apply power to the controller until you have completed and checked all wiring connections.
- Disconnect or turn off the external power source before connecting or disconnecting wires to the controller.

Programming

Add a New Controller to the Rain Bird App

1. Before mounting new controller, check the WiFi signal at controller.
 - Verify minimum signal strength of two bars at controller.
 - Mount controller closer to router or add signal booster if needed.
2. Download and launch the Rain Bird App.



3. Select "Add Controller" to begin the set-up wizard.

Set Date and Time

- When the controller is connected to WiFi, it will automatically set the date and time according to the local WiFi network settings. In the event of a power outage, the date and time will default to the local WiFi network settings.
- If a local WiFi network is not available at setup and the controller is connected to the Rain Bird App in AP Hotspot mode, the controller will default to the date and time in the mobile device settings. In the event of a power outage, the date and time will need to be manually reset by reconnecting the controller to your mobile device through AP Hotspot mode.

Create a Watering Schedule

1. **ADD PROGRAM(S):** This controller is scheduled using up to three programs (A, B and C). Basic programs include instructions on watering days, start times and durations. In the Rain Bird App, add a new program by selecting + PGM and an available program.

NOTICE

- The first time you connect to the controller, the Rain Bird App will reflect the default program assigned to the controller. You can choose to retain, change, or set up a new program.
- Programming is stored in non-volatile memory and will remain in the controller in the event of a power outage.

2. **SET PROGRAM START TIME(S):** This controller is scheduled using up to four independent start times per program. The start time(s) is the time of day at which the program will begin. Each start time will run every zone for its scheduled duration within that program.

- In the Rain Bird App, add a program start time by selecting the ⊕ icon.
- Set the zone(s) and watering duration(s) associated with the start time by selecting the ⊕ icon.

NOTICE

Start times apply to the entire program, not individual zones. Depending on landscaping needs, multiple start times may be assigned for that program. Once the start time is set, the controller begins the watering cycle with the first zone; the other zones in the program follow in sequence.

3. **SET PROGRAM RUN DAYS:** Run days are the specific days of the week in which watering occurs.

In the Rain Bird App, set the watering frequency by selecting Odd (days of the week), Even (days of the week), Custom or Cyclic (specific intervals).

NOTICE

Watering days apply to the entire program, not the individual zones.

4. **SEASONAL ADJUST** changes the watering duration (as a percent) for all zones associated with run times in an individual program. This may be manually adjusted in the Rain Bird App using the slider in the program settings.

NOTICE

- The controller must be connected to WiFi to make automatic adjustments.
- An adjustment value of 100% is representative of irrigation during the average hottest time of year, so even if you're experiencing warm weather on a summer day, you may not see an adjustment above 100%.

5. **RAIN DELAY:** In the Rain Bird App, manually turn off automatic watering for a fixed number of days when it rains even without a rain sensor.

- Suspend watering for up to 14 days by selecting the ☁ icon in the controller settings.
- Slide the bar to the desired number of days to delay automatic watering.
- Select "Save" to store the setting.

NOTICE

The maximum numbers of days to delay watering is 14. After the days expire, automatic irrigation will begin again according to the programmed schedule.

Manual Watering

ON THE CONTROLLER

- To start manual watering, press the ▶ button.
- As a default, each zone will run for 10 minutes; you can choose to retain or change the watering duration in the Rain Bird App.
- The blinking LED will give indication for which zone is active.
- To advance to the next zone, press the ►► button.
- To stop manual watering on the controller, press the ⊖ button.

IN RAIN BIRD APP

- To start manual watering, select the ◊ icon and select manual watering preferences.
- To advance to the next zone, select the ►► icon.
- To stop manual watering in the Rain Bird App, select the ■ icon.

Automatic Watering

ON THE CONTROLLER

NOTICE

When operating in automatic mode, each program will run according to the start times, run days, and run times for each zone in sequence until all scheduled watering has been run.

- Press ⌂ to start automatic watering according to scheduled program(s).
- The blinking LED will give indication for which zone is active.
- To advance to the next zone, press the ►► button.
- To stop automatic watering on the controller, press the ⊖ button.

IN RAIN BIRD APP

The Rain Bird App offers a toggle to switch between automatic watering and off status.



- 1 CONTROLLER DOOR:**
Removable door for protection against inclement weather
- 2 AUTOMATIC WATERING:**
Watering occurs automatically according to programmed schedules
- 3 OFF:**
Cancel all active watering immediately and disable automatic irrigation
- 4 MANUAL WATERING:**
Start watering immediately for all zones in sequence
- 5 ADVANCE TO NEXT ZONE:**
Advance to the next zone in sequence
- 6 PAIRING MODES:**
Toggles between AP Hotspot and WiFi pairing modes
- 7 WIRING BAY:**
Contains the transformer box and terminal block to connect valve zone wires and optional accessories
- 8 POWER CORD (FOR MODELS RC2-AUS, ARC8-AUS and ARC8-230V):**
1.8 m AC power cord

Technical Support

For help setting up or operating the Rain Bird WiFi Smart Controller, please call Rain Bird toll-free Technical Support at: 1-800-RAIN BIRD (800-724-6247) or visit www.rainbird.com. For more information, including troubleshooting, scan the QR code:



LED Status on Controller

LED	ACTION
STATUS flashing blue	Quick Pair broadcast mode
STATUS alternating red and green	AP Hotspot broadcast mode
STATUS solid green	WiFi broadcast mode
STATUS flashing red	Not connected
AUTO solid green	Automatic watering active
OFF solid red	Controller off
MANUAL flashing green	Manual watering active

Safety Instructions

⚠ WARNING

This appliance is not intended for use by persons (including children) with reduced physical, sensory or mental capacity, or lack of experience and knowledge unless they have been given supervision or instruction concerning use of the appliance by a person responsible for their safety. Children should be supervised to ensure that they do not play with the appliance.

For models RC2-AUS, ARC8-AUS and ARC8-230V, if the supply cord is damaged, it must be replaced by the manufacturer, its service agent, or similarly qualified persons in order to avoid a hazard.

Special precautions must be taken when valve wires are located adjacent to, or share a conduit with other wires, such as those used for landscape lighting or other electrical systems.

Separate and insulate all conductors carefully, taking care not to damage wire insulation during installation. An electrical "short" (contact) between the valve wires and another power source can damage the controller and create a fire hazard.

⚠ CAUTION

This device must be installed to provide a separation distance of at least 20 cm from all persons and must not be co-located or operating in conjunction with any other antenna or transmitter.

NOTICE

Changes or modifications not expressly approved by Rain Bird could void the user's authority to operate the equipment.

Use only Rain Bird approved accessory devices. Unapproved devices may damage the controller and void warranty.

All electrical connections and wiring runs must comply with local building codes. Some local codes require that only a licensed or certified electrician can install power. Only professional personnel should install the controller. Check your local building codes for guidance.

DISPOSAL OF ELECTRONIC WASTE



This symbol on the product and/or accompanying documents means that used electrical and electronic equipment (WEEE) should not be mixed with general household waste. For proper treatment, recovery, and recycling, please take this product to designated collection points. Disposing of this product correctly will help save resources and prevent any potential negative effects on human health and the environment, which could otherwise arise from inappropriate waste handling.

EU DECLARATION OF CONFORMITY

Hereby, Rain Bird Corporation declares that the radio equipment type RC2-230V and ARC8-230V are in compliance with Directive 2014/53/EU.

The full text of the EU declaration of conformity is available at the following internet address: www.rainbird.com/RegulatoryCompliance

UK DECLARATION OF CONFORMITY

Hereby, Rain Bird Corporation declares that the radio equipment type RC2-230V is in compliance with Statutory Instrument 2017 No. 1206.

The full text of the UK declaration of conformity is available at the following internet address: www.rainbird.com/RegulatoryCompliance

RF SPECIFICATIONS

- Maximum radio-frequency power: 19.22 dBm
- Operating frequency band: 2 402 - 2 480 MHz

SPECIFICATIONS

- Electronic disconnection on operation
- Rated impulse voltage: 2500V~



Rain Bird Corporation

6991 East Southpoint Road
Tucson, AZ 85756
USA
Tel: (520) 741-6100

Rain Bird Corporation

970 W. Sierra Madre Ave.
Azusa, CA 91702
USA
Tel: (626) 812-3400

Rain Bird International

1000 W. Sierra Madre Ave.
Azusa, CA 91702
USA
Tel: (626) 963-9311

Rain Bird Turkey

Çamlık Mh. Dinç Sokak Sk. No.4 D:59-60
34760 Ümraniye, İstanbul
TÜRKİYE
Tel: (90) 216 443 75 23
rbt@rainbird.eu
www.rainbird.com/eur

**Rain Bird Europe SNC
Rain Bird France SNC**

240 Rue René Descartes
Bâtiment A, parc Le Clamar
BP 40072
13792 Aix En Provence
FRANCE
Tel: (33) 4 42 24 44 61
rbe@rainbird.eu · www.rainbird.com/eur
rbf@rainbird.eu · www.rainbird.com/fr/eur

Rain Bird Deutschland GmbH

Königstraße 10c
70173 Stuttgart
DEUTSCHLAND
Tel: 49 (0) 711 222 54 158
rbd@rainbird.eu
www.rainbird.com/de/eur

Rain Bird Ibérica S.A.

C/ Valentín Beato, 22 2ª Izq. fdo
28037 Madrid
ESPAÑA
Tel: (34) 91 632 48 10
rbib@rainbird.eu · www.rainbird.com/es/eur
portugal@rainbird.eu · www.rainbird.com/pt-pt/eur

Rain Bird Australia Pty Ltd.

Unit 13, Level1
85 Mt Derrimut Road
PO Box 183
Deer Park, VIC 3023
AUSTRALIA
Tel: 1800 724 624
info@rainbird.com.au
www.rainbird.com/aus

Rain Bird Brasil Ltda.

Rua Marques Póvoa, 215
Bairro Osvaldo Rezende
Uberlândia, MG, BRASIL
CEP 38.400-438
Tel: 55 (34) 3221-8210
www.rainbird.com.br

Technical Services

for U.S. and Canada only:
1-800-RAIN BIRD
1-800-247-3782
www.rainbird.com