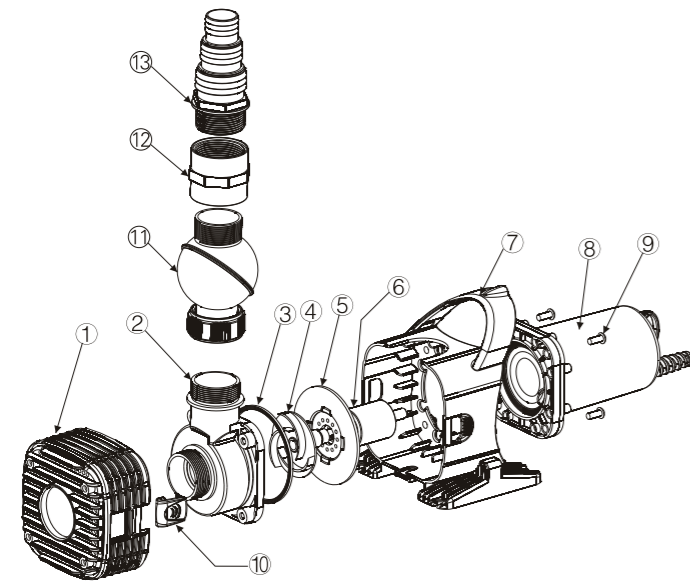


Thank you for purchasing an Aquagarden Waterfall, Filtration and Pond Pump. It features ceramic bearings for long life and an energy saving asynchronous motor that makes it economical to run. For optimum performance and safety please read these instructions carefully and completely before installing and operating this pump.



- ① Water inlet cover (Prefilter)    ② Water chamber    ③ Seal ring
- ④ Impeller    ⑤ Front cover    ⑥ Rotor    ⑦ Handle    ⑧ Motor (Main body)
- ⑨ Stainless steel screw    ⑩ Clip    ⑪ Ball-joint    ⑫ 1.5" connector
- ⑬ 3-step water outlet

### Guarantee

We provide a guarantee of 24 months from the date of purchase on the Aquagarden Barracuda. This guarantee does not cover parts subject to wear and tear, such as batteries, impellers, lamps, ceramic discs and o-rings, or any damages that are a result of misuse, tampering (including damage and alteration of the cable), negligence, damage and technical modification. We reserve the right to repair or replace the unit. No repairs or replacement will be undertaken for products that have not been properly maintained. The guarantee will be honoured only if the product is returned to your dealer or Aquagarden (freight pre-paid) complete with your receipt. Product will deteriorate with prolonged exposure to sunlight and fading of the product is not covered by the guarantee.

The refund of costs for removal or installation, onsite inspection, checks and claims for lost profit caused by the unit or its use are exempted from the guarantee.

Our goods come with guarantees that cannot be excluded under the Australian Consumer Law. You are entitled to a replacement or refund for a major failure and compensation for any other reasonably foreseeable loss or damage. You are also entitled to have the goods repaired or replaced if the goods fail to be of acceptable quality and the failure does not amount to a major failure.

The benefits to you given by the warranty are in addition to other rights and remedies of the consumer under a law in relation to the goods and services to which the warranty relates.

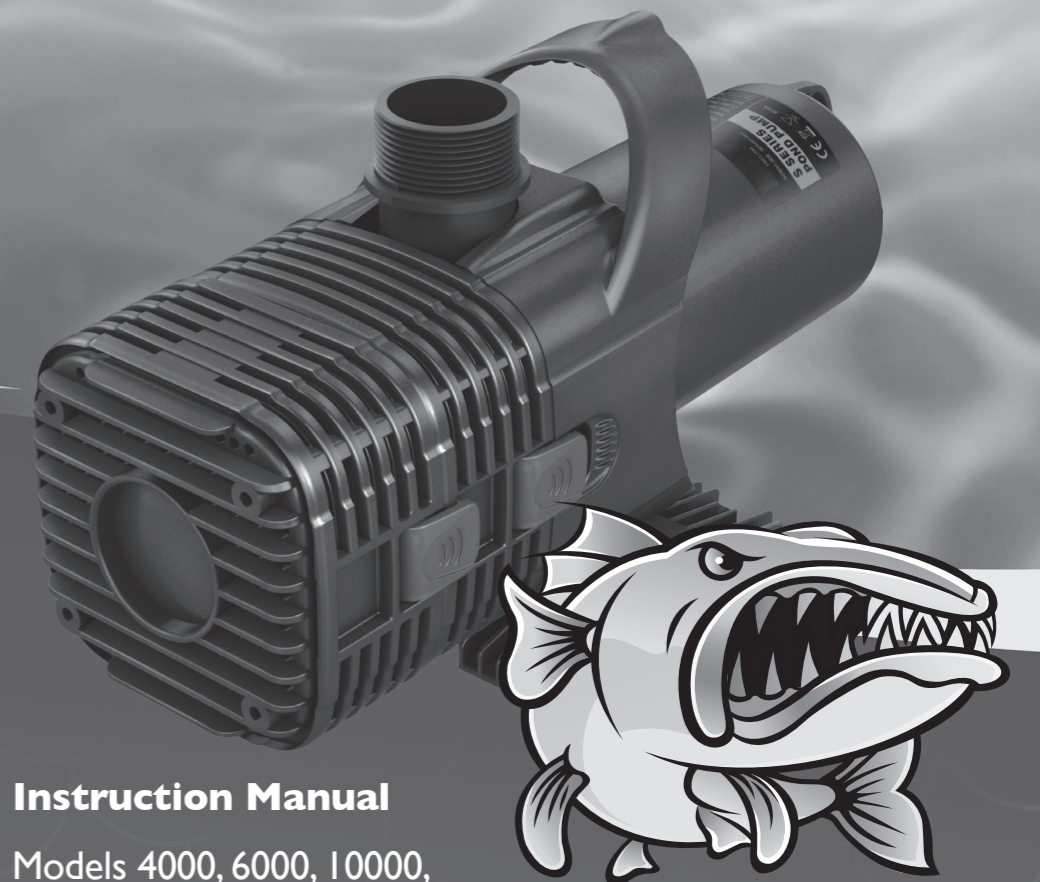
In the advent of a warranty claim please contact the place of purchase or alternatively ring us on 1800 222 010 for details on returning the product.

**Aquagarden,**  
**4 Kingscote Street, Kewdale,**  
**Western Australia, 6105.**  
**[www.aquagarden.com.au](http://www.aquagarden.com.au)**



# Barracuda

Waterfall, Filtration And Pond Pump



### Instruction Manual

Models 4000, 6000, 10000,  
 15000, 25000

Before installing and operating your pump, please read this Instruction Manual thoroughly and retain it for future reference.

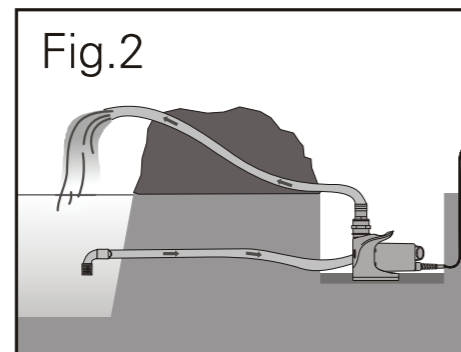
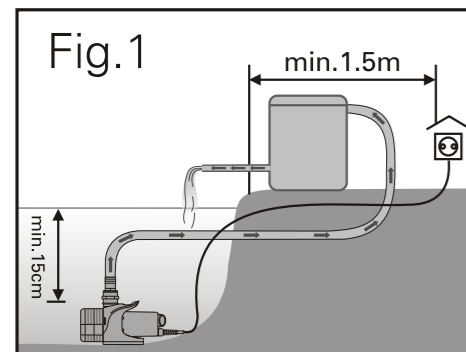
## Features

1. Multi-purpose pump rated for continuous use
2. Energy saving split tube motor
3. Dual use – out of pond below water level, or fully submersed in pond
4. Solids handling up to 6mm
5. Non-corrosive, wear-resistant ceramic impeller shaft
6. Fully encapsulated motor with thermal overload protection
7. Foam-free inlet & removable impeller assembly for easy maintenance
8. 10m rubber insulated cable

## Applications

This pump is ideally suited to use in a water garden to circulate pond water through a pond filtration system, a watercourse, over a waterfall or to pump water through a water feature. It can also be used to drain water from a pond or an aquarium.

## Installation Instructions



### Installation when submersed under water:

See Figure 1

1. The pump must be completely immersed under water. The minimum depth of water is 15cm to prevent the possibility of drawing air into the system.
2. When submersed in a pond and in order to prevent the filter from being clogged, the pump must be installed on a solid, flat surface so as not to suck up sand and silt.

### Installation when used outside water:

See Figure 2

1. The pump can be installed outside the pond so long as it is located in a position that is below the surface level of the pond water. It should be placed on a solid, flat surface and fixed with screws.
2. To connect the pump, remove the filter cover and then connect the water inlet and outlet pipes. These pipes must be well sealed and the inlet pipe primed with water before operation.
3. All piping must be of an appropriate size for use with the pump to prevent clogging. Please consult your Aquagarden stockist for advice on the correct size and type of pipe.

## Operational Instructions

### During Operation

If clogging of the filter cover inlet occurs, shut off the power immediately.

If the pump does not operate as it should after cleaning, please consult your local Aquagarden stockist to establish the cause of the problem.

If freezing temperatures are forecast, switch off the pump, remove it from the water and store it after cleaning and drying the impeller chamber completely.

### After periods of inoperation

If the pump is left submersed in pond water for a long period of time without operation, it could lead to the accumulation of debris inside the pump. Clean the pump and run it in clean water for a few minutes before returning the pump to the pond.

## General Safety Instructions

1. Only use this pump with the voltages specified on the pump label.
2. Disconnect the mains supply before handling the pump in any way.
3. Never operate the pump when people are in contact with the water.
4. Never carry, lift, lower or pull the pump by the cable.

## Electrical Safety Instructions

1. Always operate the pump at voltages between 220 & 240 volts.
2. For outdoor use, the plug must be connected to a weatherproof socket.
3. The electricity supply circuit must be fitted with a suitable fuse or a Residual Current Device (RCD), also known as a Residual Current Circuit Breaker (RCCB), with a tripping current not exceeding 30 mA.
4. It is necessary to conform to the regulations of the local electricity authority that may require additional cable protection. There may also be building regulations covering the installation of pumps and ponds.
5. The electrical cable is permanently connected and sealed into the pump. Should the cable become damaged, it cannot be repaired or replaced and the pump should be discarded.

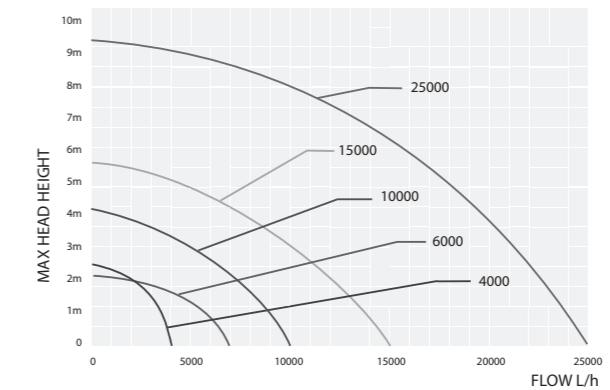
## General Maintenance & Cleaning

While the water chamber has a very effective self cleaning feature, any apparent reduction in the water flow rate from your pump usually indicates that it requires cleaning. Regular cleaning and maintenance will significantly lengthen the life of the impeller and the motor unit.

### To clean your pump:

1. First disconnect it from the mains supply and press in the two sides of the water inlet cover to remove it from the water chamber housing.
2. Now undo the 4 screws that connect the water chamber housing to the motor body and remove the water chamber to reveal the impeller.
3. Remove and check the impeller and rotor for dirt and grime and clean all parts in clean water. Do not use hard objects, aggressive cleaning agents, or high-pressure machines.
4. Rinse all parts thoroughly in clean water and reassemble and reinstall your pump following the Installation Instructions above.

## Performance Curve



## Performance Chart

MODEL	4000	6000	10000	15000	25000
Power	45W	65W	135W	210W	620W
Max Flow	3600L/h	6100L/h	10000L/h	15200L/h	25000L/h
Max Head	2.4m	2.1m	4.2m	5.5m	9.5m
Cable length	10m	10m	10m	10m	10m

## A guide to simple problem solving

If you encounter a problem with this pump, before returning it to your Aquagarden stockist please check the following chart for a possible cause and solution to your problem.

SYMPTOM	PROBABLE CAUSES	COUNTERMEASURE
The pump does not run	Power is not turned on	Turn on the power
	Improperly plugged in	Push the plug fully into the socket
	Blocked impeller	Unplug the pump and remove foreign matter from impeller
The motor turns on and off repeatedly without the pump running, or the motor suddenly stops and cannot be started again	The water inlet or outlet pipe is clogged with debris	Unplug the pump and remove foreign matter from the pipes
The pump runs normally to start with but the water flow reduces or there is no water flow at all	Impeller is worn out and needs replacing	Replace the impeller with a new one from your Aquagarden stockist
	The water level in the pond is too low, exposing the pump to the air	Ensure that the pump is fully submerged under water and, if necessary, top up the pond
	A hose is too long or clogged with debris	Shorten the hose and / or clear the blockage
	There is air in the impeller chamber (only applicable when the pump is located out of water)	To remove the air, submerge the pump under water and switch ON and OFF two or three times