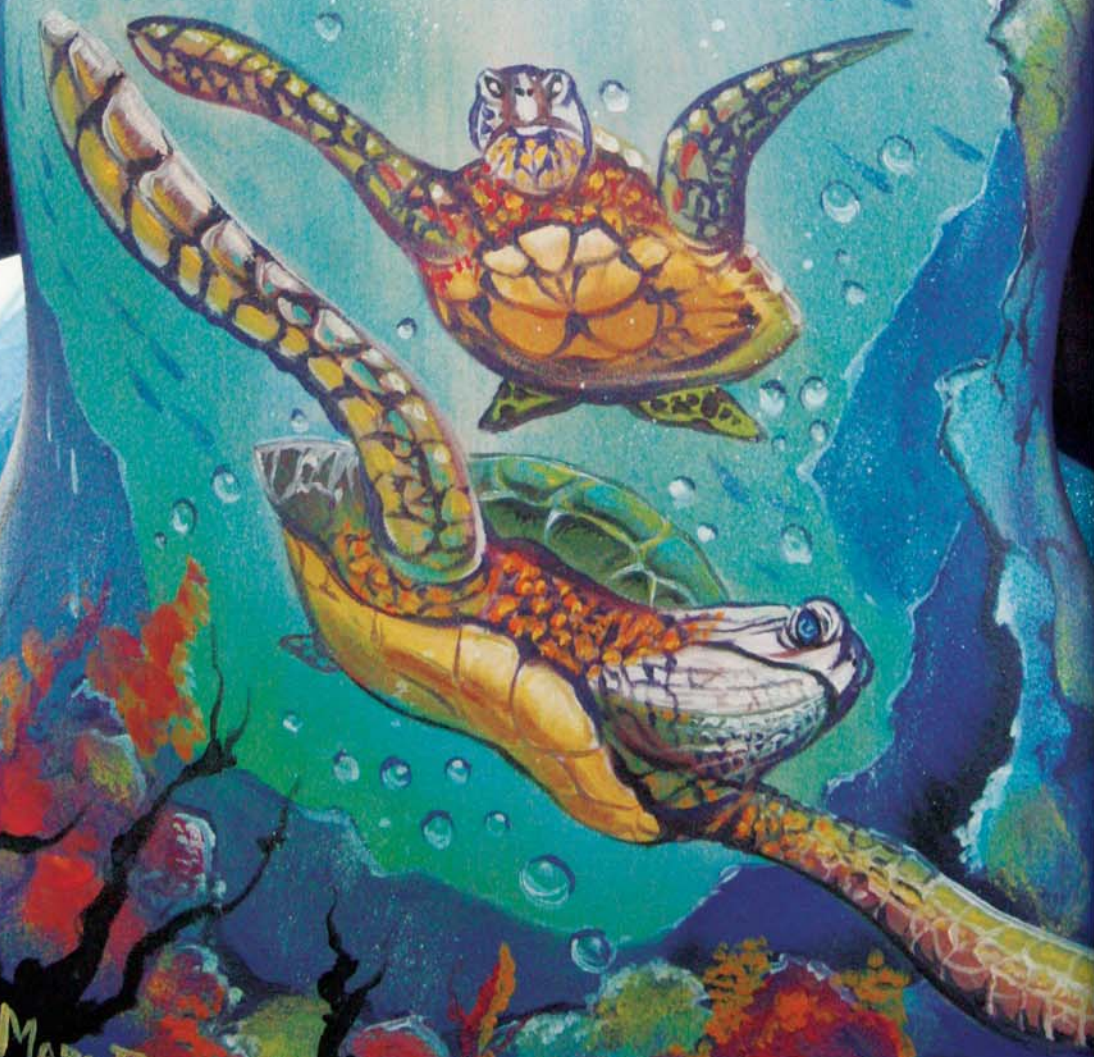


Color Never Looked So Good!

Paradise
MAKEUP AQ™



The Art of Face & Body Painting



Vibrant Colors for Professional Results



Paradise Makeup AQ™ ProPalette
Sized for the professional face and body painter, each kit holds 12 professional size (40 gm.) containers of our superior **Paradise Makeup AQ™**. Convenience and value in an attractive and sturdy case. **Item #800-PRO-A**
Item #800-PRO-B



Paradise Makeup AQ™, a moist, semi-soft cake makeup, features vibrant colors that dry quickly with minimal rub-off, yet are easy to remove. Our special formula includes aloe and chamomile and the enriching emollients glycerin, avocado oil and cocoa butter. These unique ingredients are safe and gentle on the skin and give **Paradise Makeup AQ™** richer, more vibrant, color-saturated coverage than ordinary performance makeup.

Paradise Makeup AQ™ is water-soluble for easy soap and water removal. Whether you need a single color or six, simply apply the creamy makeup directly to your skin with water or use a brush or sponge over a traditional pressed powder cake or liquid makeup base.

Available in 32 vibrant colors and various sizes.

Customize Your Own Palette

We now offer the ready-to-fill **Paradise Makeup AQ™ ProPalette** so that you can create a palette of your own choosing. The case will hold 12 of your favorite **Paradise Makeup AQ™ Professional Size** (40 gm.) colors (each sold separately). Mix and match to create multiple color collections - no more fumbling around for the right combinations! **Item #800C-E**



Paradise

MAKEUP AQ™



Tropical Palette



Metallic Palette



Basic Palette



Pastel Palette



Paradise Makeup AQ™ Empty Palette

Create your own custom collection with the Paradise Makeup AQ™ palette. Holds 8 refill (7 gm.) size cakes. **Item #808-E**



Color-Perfect Palettes

We've taken the fuss out of coordinating colors with our convenient 8-color Paradise Makeup AQ™ palette sets. Each palette includes 8 refillable colors. (7 gm. each) Choose from:

- **Basic** - primary colors and neutrals - **Item #808-B**
- **Tropical** - hot colors - Add sizzle to your designs! **Item #808-T**
- **Pastels** - popular pastels - Soft, but not timid, colors. **Item #808-P**
- **Metallic** - shimmering metals. **Item #808-M**

Individual colors and 7 gm. palette refills are shown on page 5.

Look for the full Paradise Makeup AQ™ line on display at your local Mehron dealer.

TIP!

When setting up your workstation, keep your paints, brushes and accessories clean and well organized. Stop occasionally during sessions to clean your work area and replace all water containers.



Freestanding Mehron display



Paradise

MAKEUP AQ™



A Rainbow of Colors

No matter what look you want to achieve, our **Paradise Makeup AQ™** line has just the right color! Our unique formula gives you vibrant colors in a semi-soft, water-soluble base. We use rich and creamy emollients that are safe and kind to the skin. Our 40 gm. professional size containers are an excellent value for the busy professional. Order your favorite colors today!

Item #800-color code

See page 5 for colors and color code for ordering.





30-Color Laptop Palette

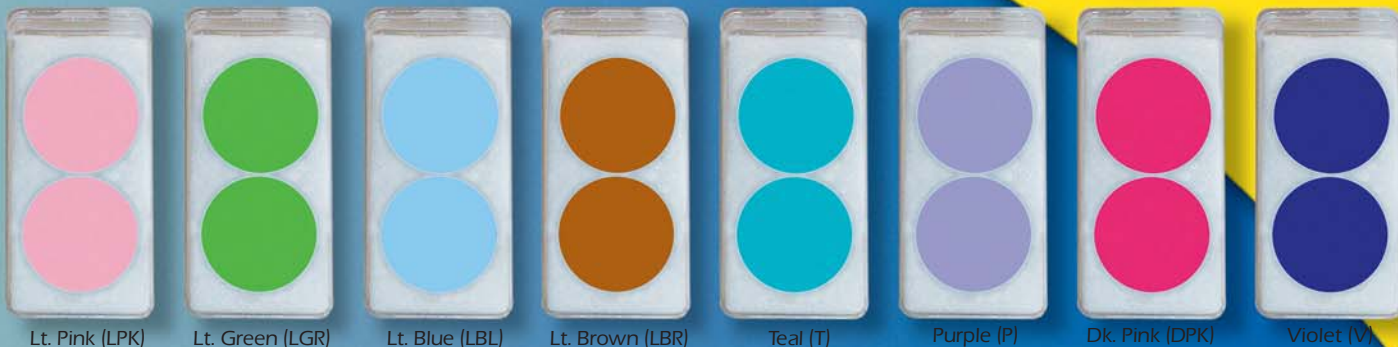
A comprehensive range of our most popular colors of **Paradise Makeup AQ™** in Refill Size. It includes all of the Basic, Pastel and Tropical colors plus extras of Black and White for outlining and highlighting. 30 units of color! Looks spectacular!



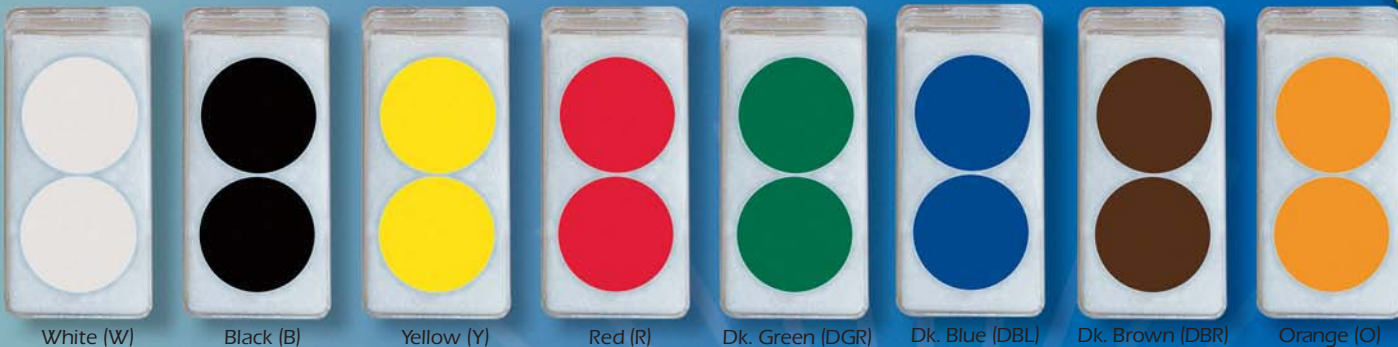
Convenient Refills

Stretch your budget with value-priced **Paradise Makeup AQ™** refills. Designed to conveniently refill any Mehron 7 gm palette container. To order an assortment of **Paradise Makeup AQ™** refills - use **Item #802-color code** 7 gm. (color codes are listed below.)

Pastel 8 color palette



Basic 8 color palette



Tropical 8 color palette



Metallic 8 color palette



Custom Brushes = Beautiful Results

A superior quality makeup brush makes all the difference. For beautiful makeup effects with **Paradise Makeup AQ™** (or any of our other makeup products), you'll want Mehron's professional-grade face and body paint brushes fabricated to the exacting specifications of world-famous face painter, Jinny.

Our unsurpassed quality can be seen in the custom length handles, luxurious bristles and durable ferrules. This set is indispensable for serious artists.

Paradise Makeup AQ™ Brushes

(Top to bottom)

- Triangular Triple Load Brush **Item #833**
- Body Chisel **Item #830**
- Wide Foam Smoothy **Item #820**
- Petal Tip Brush **Item #818**
- Wide Chisel **Item #816**
- Bold Round **Item #815**
- Medium Round **Item #814**
- 1/8" Flat Versatile **Item #812**
- Super Fine Point **Item #810**
- Fine Round **Item #813** (not shown)

Stageline™ Brushes

Looking for "Golden Nylon" bristle brushes? Our Stageline™ Brushes are the finest on the market for superior control and excellent resiliency. Complete your makeup kit with several of each size today.



- (Top to bottom)
- Fine Point **Item #310**
 - 1/8" flat **Item #312**
 - 1/4" Angled **Item #313**
 - 3/16" Flat **Item #314**
 - 5/16" Angled **Item #315**
 - 1/4" Flat **Item #316**
 - 5/16" Flat **Item #318**
 - 3/8" Flat **Item #320**



Brush Holder

Protect your brushes and keep them looking like new in this convenient holder. Stands upright on your makeup table. **Item #NBH-01**



TIP

When loading paint onto your brush, hold it at an angle. By doing this, you will load the brush evenly and keep your makeup smooth and consistent. Jabbing the makeup with the brush will cause the makeup to become lumpy and ruin your brush.



All That Shimmers is Not Glitter!

Precious Gem Powders™, our highly pigmented lustre powders, add brilliance and shimmer to any makeup design. Dab on the silky-smooth powder with your fingertip (a little goes a long way) for the ultimate control or combine with our **Barrier Spray™** to create beautiful jewel-tone paint to highlight eyes, cheeks, shoulders and more.

Choose from 13 beautiful shimmering colors in .17 oz./4.82 gm. jars. **Item #203-color code** - Garnet (GT), Amethyst (AM), Aquamarine (AQ), Diamond (DD), Emerald (EM), Pearl (PR), Black Onyx (BO), Ruby (RB), Peridot (PD), Sapphire (SP), Opal (OP), Topaz (TP), Turquoise (TO)



Mix It Up

Use our **Mixing Liquid™** makeup base with Metallic Powders and other dry pigments to create your own face paint. Dries completely and washes off easily with soap and water. 4.5 fl. oz./133 ml.

Item #129M

Metallic Shine

Our Ultra-fine **Metallic Powders** are perfect for dramatic designs or fun characters. Apply dry with fingertips or brush to highlight. For more coverage, combine with **Mixing Liquid™** to form a water-based metallic liquid makeup.

Available in 4 colors.

Silver- Item #129S .5 oz/14 gm.

Gold- Item #129G 1 oz/28 gm.

Bronze- Item #129B .75 oz/21 gm.

Copper- Item #129C 1 oz/28 gm.

Beauty is in the Detailz™

Let your imagination soar with our **Detailz™** liquid face and body makeup. Specifically created for detail work,

Detailz™ is the perfect choice for intricate designs and outlines. Fine

lines, perfectly round dots and tiny spots will flow from your brush. .25 fl. oz./7 ml. **Item**

#804-color code - Black (B), White (W), Red (R), Blue (BL), Silver (S), Gold (GD), Yellow (Y), Green (G), Pink (PK) and Purple (P).





Paradise Bold Glitters - Big Looks

Paradise Glitters are shimmering, full size polyester-based glitter particles that produce bold, dramatic effects. Color radiates from each particle - so a little goes a long way. Available in 12 sparkling colors in .35 oz./10 gm. containers. **Item #827-color code**

Colors available: Top row - Opalescent White (W), Dynamite Red (R), Deacon Blue (BL), Shamrock Green (GR), Electric Blue (EB), Pricilla Fuchsia (F).
 Second row - Mardi Gras Purple (P), 18K Gold (GD), Electric Green (EG), Holographic Silver (H), Electric Magenta (EM), Real Silver (S), Electric Yellow (EY).



Mist on Glitter

Just a quick spritz of our **Glitter Spray™** and your hair, skin and clothing will sparkle all evening. Available in 8 gleaming colors, the convenient no-mess non-aerosol pump dispenses fine glitter particles in a water-based formula. **Glitter Spray™** stays in place until you wash it off with soap and water. 1 oz., 30 ml. **Item #228-color code**

Colors available: Left to Right - Mardi Gras Purple (P), Real Silver (S), Pricilla Fuchsia (F), Deacon Blue (BL), 18 Karat Gold (GD), Brilliant Rainbow (RB), Shamrock Green (GR), Dynamite Red (R).





Glitter That Glides On

With a finger or brush, you can quickly paint on dazzling **GlitterWear™**. Easy to apply - stays in place - and washes off with soap and water. Great fun for the kids! Available in 9 colors in handy .5 oz. /14 gm. containers.

Item #128-color code

Colors available:
 Dynamite Red (R),
 Deacon Blue (BL),
 Shamrock Green (GR),
 Mardi Gras Purple (P),
 Brilliant Rainbow (RB),
 Pricilla Fuchsia (F),
 18 Karat Gold (GD),
 Holographic Silver (H),
 Real Silver (S)

Almost Fairy Dust

When we created our **Glitter Dust™**, we had the magic of fairies in mind. You can almost hear them giggle when you brush on this glittery loose powder. Highlight a cheek, a shoulder - any exposed skin. Can be combined with **Barrier Spray™** for a unique look. Available in 10 colors .25 oz./7 gm. **Item #127-color code**

Colors available: Dynamite Red (R),
 Deacon Blue (BL), Shamrock Green (GR),
 Mardi Gras Purple (P), Pricilla Fuchsia (F),
 Brilliant Rainbow (RB),
 Holographic Silver (H),
 Opalescent White (W),
 18 Karat Gold (GD),
 Real Silver (S)



TIP!

To apply dry glitters, you can use a finger, a brush, a cotton swab... you can even blow the glitters from the palm of your hand. Use the same color glitter on the same color make-up to enhance it's depth.

Did Someone Say Airbrush?



Experience Great Coverage

Our thick and rich water-based Liquid Makeup is widely acknowledged as the best product of its kind on the market. It has been transforming faces across the country since 1944.

Ease of application, excellent coverage and simple soap and water removal make Mehron's Liquid Makeup the perfect choice for body makeup, choruses, crowd scenes and large scale productions. Excellent blending characteristics mean you can easily create your own "custom" colors. Works great in the hair for a fantasy look. Our alcohol-free formula is safe and gentle to skin and hair. Available in over 2 dozen colors.

4 oz. **Item #111-color code**
1 oz. **Item #111-1-color code**



Tip!

Mehron's Liquid Makeup has been used successfully as an airbrush makeup. Makeup artists report that slightly diluting Liquid Makeup with either Barrier Spray, Mixing Liquid or distilled water gives the product a nice fluid consistency that works well in most models of airbrush equipment.

You may need to perform some "trial and error" tests to achieve just the right viscosity of makeup along with adjusting the airbrush pressure. Once you have zeroed in on the right combination, you should get optimal results.

As a bonus benefit, using Barrier Spray™ will increase the longevity of your airbrush designs.



www.mehron.com



Did Somebody Say Cake?

As rich as any dessert, **StarBlend™** offers superior coverage. Our advanced formula is fade-resistant, perspiration-resistant and non-streaking. We've blended the finest ingredients for exceptionally true colors and effortless application. A touch of the sponge and you'll see the beauty of **StarBlend™** cake makeup. Our generous 2 oz./56 gm. container holds enough for 12 large to 24 small faces!

Shown in 12 of the most popular face painting colors.
Available in over 50 total colors **Item # 110-color code**
Black (B), White (W), Red (R), Green (G), Blue (BL),
Yellow (Y), Purple (P), Light Ebony (LE), Oriental (14B),
Blithe Spirit (19B), Orange (O) and Pink (PK)



Pencil Me On

ProPencils™ are a must-have for drawing and outlining face and body designs. A brilliant combination of Mehron's celebrated ultra-creamy color-concentrated makeup with an easy-to-use pencil applicator. The multipurpose pencil slides smoothly over the skin for exceptional control. Available individually in Slim and Jumbo sizes in a variety of bold colors.

Slim: Absolutely Black (B), Really Bright Red (RB), Super White (W), True Blue (BL), Green (GR), Yellow (Y) **Item #114S- color code**

Jumbo: Absolutely Black (B), Really Bright Red (RB), Super White (W), Auguste (A) **Item #114J-color code**



Get to the Point

With two sharpening chambers and stainless steel blades, our Dual Sharpener can hone a perfect point on Mehron's Slim and Jumbo sized makeup pencils. We've also included a handy built-in bonus "cleanout stick." **Item #114DS**



TIP!

- At the end of each face painting session, thoroughly clean all of your brushes with professional grade brush cleaner and wash out all reusable sponges.
- Allow them to air dry before storing.
- Replace your dipping containers with clean water often.

The Great Barrier Spray™

Mehron's **Barrier Spray™** is an indispensable aid for any makeup application. Try this wonder spray to insulate sensitive skin from direct contact with makeup or mist it on last to set your beautiful makeup designs. Available in 3 convenient sizes.

- 1 fl. oz./30 ml. w/Pump **Item #145C**
- 2 fl. oz./60 ml. w/Pump **Item #145**
- 9 fl. oz./266 ml. Refill **Item #145-9**



Invest in Professional Accessories for Better Results



Makeup Remover Wipes

Package of 6 disposable, alcohol-free, Aloe Vera enriched makeup remover wipes. Makes quick work of makeup removal.
Item #196C

The Soft Touch

You and your clients deserve the best. Our top quality velour powder puffs offer a delicate touch for applying Mehron's Colorset™ or other loose powders.
Item #123
Item #123L



Our Most Popular

Don't forget to order plenty of our popular Latex Foam Sponge. These closed-cell foam applicators give you a smooth and even cream makeup application. Package of 6 disposable wedges. **Item #121L**



The Ultimate Sponge

For the discriminating professional makeup artist, we offer the Foam Hydra Sponge. This improved foam applicator sponge is perfect for applying Mehron Liquid Makeup. Keep clean with soap and water. **Item # 121**

StageLine™ Brush Treatment

Keep your brushes clean, deodorized and sanitized. Whether you're using it for yourself or when you're out face painting, StageLine™ Brush Treatment is the quick and easy way to clean your brushes between uses. 4.5 fl. oz./133 ml.

Item #300



Get to the Point

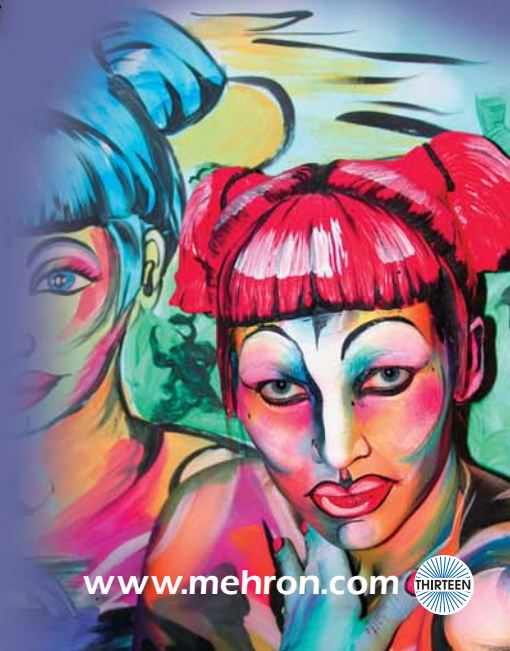
Our tightly woven, double cotton swabs are great for application or detailed touch ups.
Item #125



For Beards and Bruises

Our open weave Stipple Sponge makes it easy to create a "five o'clock shadow" beard, old age spots, bruises and other stippling effects. Package of 3 blocks.

Item #124



Fantasy

Tube Makeup

F/X™



For Fantastic Faces

Try our **Fantasy F/X™** Tube make-up for fantastic make-up effects. This product is an excellent choice for beginners and pros alike! Designed for fast-paced face painting and sports events, our highly pigmented, water-based makeup is easy to apply and dries quickly. This safe, non-toxic formula comes in convenient squeeze tubes for informal on-the-go activities. Choose from over 2 dozen brilliant colors.

1 fl. oz./28 ml. **Item #FFX-color code**

Fantasy F/X™ Party Palette Item #FFX-PP

Wow them with these eye-popping colors

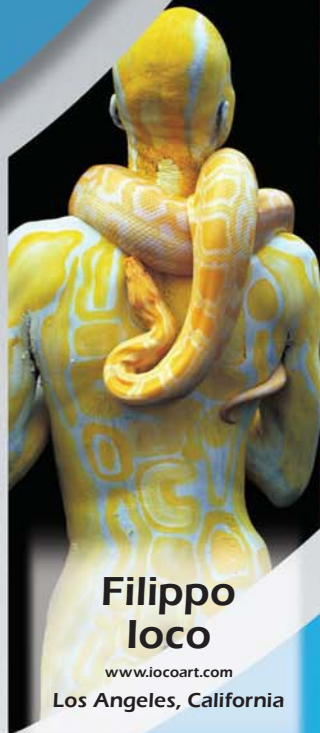
Colors: Black (B), Wolfman Brown (WB), Orange (O), Creole Brown (C), Soft Beige (F) Monster Grey (MG), Purple (P), Green (G), Red (R), Yellow (Y), Blue (BL), White (W), Glow-in-the-Dark (GL) Moonlight White (MW), Gold (GD), Silver (S), Burgundy (BY) Zombie (Z), Teal (T), Kelly Green (K), Bronze (BZ), Copper (CP), Navy Blue (NB), Liberty Green (LG)



www.mehron.com

Featured Artists

Mehron, Inc. thanks the artists who so willingly shared their helpful tips and great ideas along with their images during the creation of this catalog. While we proudly produce face and body makeup of unsurpassed quality, it is their insight, talent and skills that transform our tools into inspiring works of art. We continue to be inspired by you.



Filippo loco

www.iocoart.com

Los Angeles, California



Marcela Murad

www.faceandbodyart.net
Hollywood, Florida



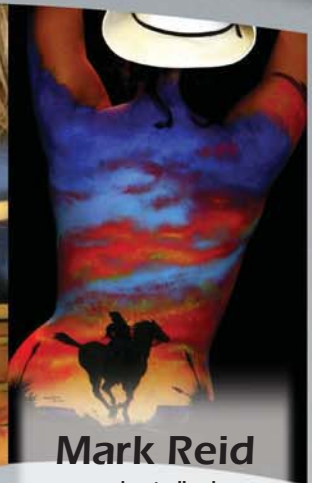
Martin Armand

www.martinarmand.com
Vancouver, Canada



Pashur

www.canvasalive.com
Orlando, Florida



Mark Reid

www.enchantedbodies.com
Dallas, Texas

Jinny

Make-up Artiste

www.jinnymake-upartiste.com
Châteauguay, Canada

A special thanks to Jinny who spent countless hours helping to create a catalog that is visually exciting as well as informative. Her creative talent, attention to detail and extensive knowledge of face & body painting show through on every page.

Every effort has been made to accurately illustrate each product in this catalog. Product colors shown in this catalog and on the Mehron, Inc. Web site (www.mehron.com) may vary from actual product colors due to the limitations of the printing process and individual computer monitors.

Front Cover Artwork by: **Mark Reid**

Front Cover Faces Artwork by: **Jinny**

Thanks to our models - **Kadee S., Menina F., Katie V.**



www.mehron.com

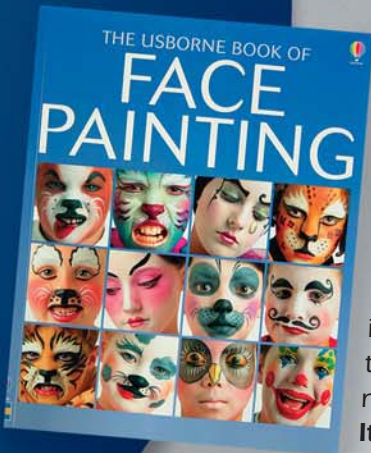




Perfect Your Skills

Run out of willing faces? We have the answer - Mehron's Face Painting Practice Head. Guaranteed to hold still, not rub his or her eyes and never run out of patience. This professional quality, washable practice head is the ideal learning tool to perfect face painting basics, practice specific techniques, test new makeup products and create your own unique designs.

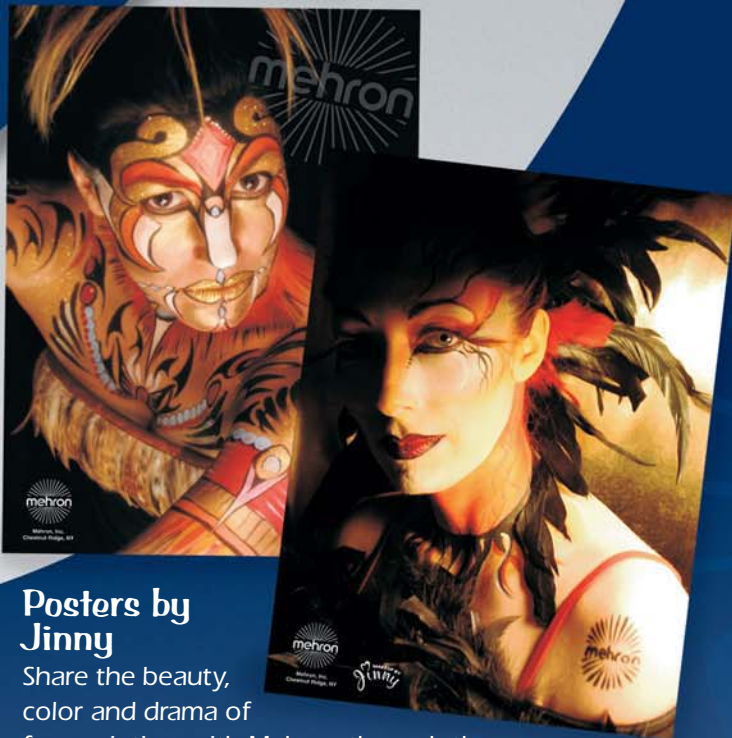
female - Item #HEAD-F
male - Item #HEAD-M



Learn Face Painting

The Usborne Book of Face Painting (Usborne Press) is a great resource for learning face painting. Filled with colorful examples and detailed instructions, you'll be transforming faces in no time!

Item #BOOK-1



Posters by Jinny

Share the beauty, color and drama of face painting with Mehron through the talents of world-renowned face painting artist and Mehron advisor - Jinny. Each poster is full color, 18"x24".

Tribal Item #POS-04

Feathers Item #POS-05



Watch How an Expert Does It

Watch renowned face painting artist, Jinny, use Mehron makeup products to demonstrate basic face painting techniques and application methods in her catalog of Videos.

Coming soon
on DVD!

- **Make Your Face Painting Come Alive VHS** - In this 30-minute video, Jinny shares her secrets of the trade and helps you bring out the smiles in everyone with her innovative style. Some of the designs demonstrated are Flower, Shark, Frog, Reindeer, Salamander, Dragon and lots more fun! Item #VID-7

- **Illusion VHS** - In this 70-minute video, Jinny demonstrates some of her revolutionary techniques that every face painter should know. Some of the designs in this video are Blue Leopard, Mask of Illusions, Ugly Teeth Monster, Ear Snail and various Theatrical Masks. Item #VID-6

- **Try Abstract VHS** - Experiment with lines, shapes and patterns to create captivating designs. Jinny shows how to use different brush strokes to effortlessly create masterpieces in minutes. Approx. 40-Minutes Item #VID-5

- **Jinny Make-up Artiste - Volume 1 DVD** - Jinny has created a variety of new design and tattoo ideas for boys, girls and adults. Most can be painted in just a few strokes and get that "wow" reaction! Item #DVD-1

- **Jinny Make-up Artiste - Volume 2 DVD** - Develop more creative and artistic ideas for your painting. Includes abstract ideas, some favorite characters and colorful mask designs. Item #DVD-2

