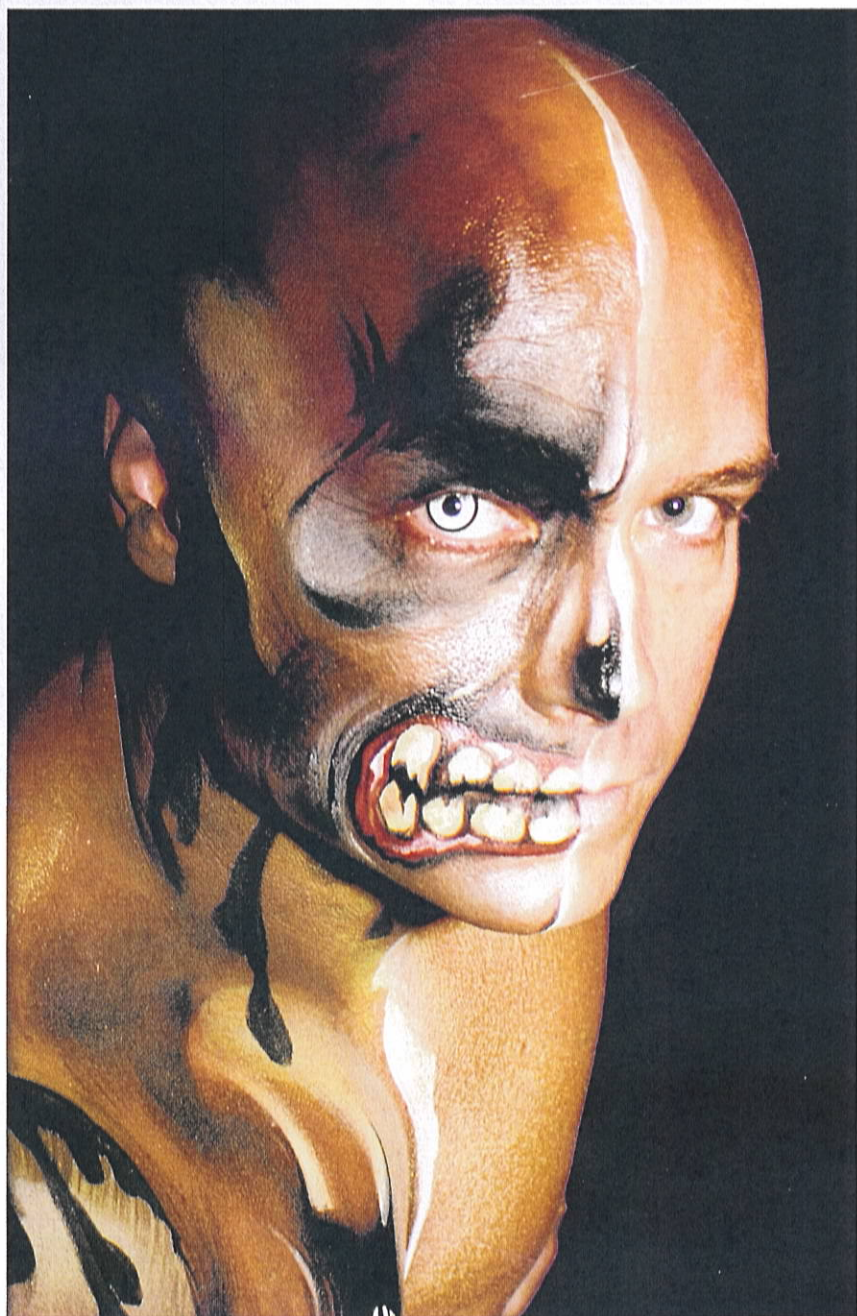


mehron

PRODUCT GUIDE

www.mehron.com



Index of Products

I) ESSENTIAL MAKEUP

- A) StarBlend™ Cake
- B) CreamBlend™ Stick
- C) Celebré Professional Cream
- D) Foundation Greasepaint
- E) Color Cups
- F) Liquid Makeup
- G) Fantasy F/X™
- H) Mask Cover

II) EXTREME BEAUTY

LIPS

- A) L.I.P Color Cream - New!
- B) L.I.P Pencil - New!
- C) Glosstone - New Formula!
- D) Lip Stick

EYES

- A) E.Y.E Creams - New!
- B) E.Y.E Liner Pencil
- C) E.Y.E Lashes - New!
- D) E.Y.E Powder
- E) Precious Gem Powders
- F) Mascara

CHEEKS

- A) CHEEK Cream - New!
- B) CHEEK Powders

NAILS

- A) Nail Polish

III) CLOWNING

- A) Clown White
- B) Clown White Lite
- C) Clown Pink
- D) Clown Makeup Palette
- E) ProPencils
- F) ProPencil Dual Sharpener
- G) Grease Makeup Crayons
- H) ProFACE - No Sweat

IV) FACE AND BODY PAINTING

- A) Paradise Makeup AQ™ Professional Size
- B) Paradise Makeup AQ™ Refills and Palettes
- C) Paradise Makeup AQ™ Brushes
- D) Paradise Makeup AQ™ Glitters
- E) Paradise Makeup AQ™ Detailz™

- F) Jinny DVD - Vol. 1
- G) Jinny DVD - Vol. 2
- H) Jinny DVD - Portfolio Part 1
- I) LUX Airbrush - New!
- J) Over the Rainbow Crayons
- K) WaterWorks
- L) Fantasy F-X Party Palette
- M) Henna-Style Tattoo Cosmetic "Ink"

V) SPECIAL EFFECTS/ HALLOWEEN/MOVIES

- A) Barrier Spray
- B) Blood Products
 - 1. Stage Blood
 - 2. Coagulated Blood Gel
 - 3. Squirt Blood
- C) Crepe Hair
- D) Extra Flesh
- E) Modeling Putty/Wax
- F) Modeling Wax
- G) Putty Spatula
- H) SynWax
- I) Fixative "A"
- J) 3-D Gel
- K) Hair White and Silver
- L) Admed Liquid Adhesive
- M) Admed Adhesive Remover
- N) Pro ColoRings™
 - 1. Bruise ColoRing
 - 2. Concealer ColoRing
 - 3. Neutralizer ColoRing
- O) Rigid Collodion
- P) Speciality Powders
- Q) Spirit Gum
- R) Matte Spirit Gum
- S) Spirit Gum Remover
- T) Sweat & Tears
- U) Tattoo Cover
 - 1) Tattoo Covering
 - 2) Tattoo Covers
- V) Tooth F/X
- W) Touch Up
- X) Liquid Latex
- Y) Bald Cap

VI) PROFESSIONAL MAKEUP ACCESSORIES/TRADE SECRETS

- A) Glitter
 - 1) GlitterDust
 - 2) GlitterWear
 - 3) GlitterSpray
- B) Metallic Powder

- C) Mixing Liquid
- D) AdGem - New!
- E) Aura Bronzing Gel - New!
- F) Velvet Finish Primer - New!
- G) Colorset Powder
- H) UltraFine Powder
- I) Brush Cleaner
- J) Stageline Makeup Brushes
- K) Foam "Hydra" Sponge
- L) Latex Sponge Applicator
- M) Natural Sea Sponge
- N) Powder Puff Applicator
- O) Stipple Sponge Applicator
- P) Practice Head
- Q) Usborne Book of Face Painting
- R) Makeup Removers & Moisturizers
 - 1) Makeup Remover Lotion
 - 2) "E"nriched Cold Cream
 - 3) Makeup Remover Cream
 - 4) Xtra Gentle Eye Makeup Remover
 - 5) Soothing Oil-Free Moisturizer Lotion
 - 6) Nice & Clean Makeup Remover Cloths
- S) Brush Holder

VII) MAKEUP KITS

EDUCATIONAL MAKEUP KITS

- A) Celebré Makeup Kit
- B) All-Pro Makeup Kits
- C) Mini-Pro Student Makeup Kit
- D) Dancer's Makeup Kit

HALLOWEEN MAKEUP KITS

- A) Tri-Color Palette
- B) Modern Vampire - New!
- C) Evil "J" Villain - New!
- D) Werewolf - New!
- E) Zombie - New!
- F) Pirate
- G) Bald Cap
- H) Goth Punk
- I) Blue Person
- J) Skeleton
- K) Cat/Animal
- L) Monster/Frankenstein
- M) Witch
- N) Vampire
- O) Clown

I. Makeup Essentials



A) StarBlend™ Cake Makeup

Item #110

Description: StarBlend is a water-activated pressed powder makeup with high pigmentation.

Application: StarBlend can be applied either dry with a powder brush or wet with a moist sea sponge. Colors mix well by blending on the skin or by shaving dust from the container and mixing on the side. StarBlend lasts longer than conventional cake makeup and can be sealed with Barrier Spray to make it sweat resistant. Remove with soap and water.



B) CreamBlend™ Stick Makeup

Item #400

Description: CreamBlend Stick is a highly pigmented, refined cream makeup containing vitamins and antioxidants. Does not contain the petrolatum base often found in traditional "greasepaint" makeup.

Application: CreamBlend makeup allows for greater flexibility in blending and mixing of colors and stands up well under extreme lighting conditions. For use in all performance makeup conditions. CreamBlend Stick Makeup is available in over 60 colors including a wide range of skin tones plus primary colors, black and white. Set cream makeup with Colorset Powder (and Barrier Spray, if desired). Remove with Makeup Remover or Cold Cream followed by soap and water.



C) Celebré Professional™ Cream Makeup

Item #201

Description: Celebré is our top of the line, premium cream makeup product. It contains no mineral oils, fragrances, myristate or beeswax. It is a high-tech, silicone based cream that provides a long lasting, natural effect. Celebré covers without any "masking effect" and blends very well. Does not penetrate the skin or clog pores. Celebré allows the skin to "breathe". Remove with Makeup Remover or Cold Cream followed by soap and water.

Application: Very popular in HD TV/Video, film, photography, every day application, beauty and intimate theater (for close up work). May be used in conjunction with StarBlend Cake, Pressed Powder Blush or CHEEK Cream Blushes for highlighting and shadowing. Celebré includes our exclusive "Olive Tone" (OS) series of colors, a popular variety of natural skin tones for all ethnicities.



D) Foundation Greasepaint

Item #102

Description: A lanolin enriched cream makeup formulation. This is the traditional foundation most commonly referred to as "Greasepaint", a term derived from the use of petrolatum in the makeup.

Application: Widely used in the clown market, Mehron's Black, Red, R/B Red, Light Auguste and Auguste have become staples in the makeup kits of both professional and amateur clowns for decades. Apply with sponge or brush and set with Colorset Powder. Remove with Makeup Remover or Cold Cream followed by soap and water.



E) Color Cups

Item #CCC

Description: All colors are popular small size versions of the traditional #102 Foundation Greasepaint in a convenient .5 oz. container. The White Color Cup is Mehron's famous Clown White.

Application: See above. Perfect size for the Halloween market.



F) Liquid Makeup

Item #111

Description: A highly pigmented water-based liquid makeup that dries completely.

Application: Professional choice for quick applications. May be used in combination with Mixing Liquid or Barrier Spray as airbrush makeup (especially for large cast scenes and full or partial body coverage). Liquid Makeup is also used to create custom colors of Liquid Latex or 3-D Gel. Complement the chosen body color with the same color base used on the face area. Available in skin tones for theater, stage and film, and primary colors for fantasy, Halloween and face painting. Various popular sizes. Removes with soap and water.



G) Fantasy F/X™

Item #FFX

Description: Water-based, highly pigmented soft cream makeup in a plastic squeeze tube.

Application: Apply with sponge, brush or fingertips to skin or hair. Spreading Fantasy F/X™ thinly will speed up drying time. Great for year round face painting and sporting events. Washes off easily with soap and water.



H) Mask Cover

Item #102LM

Description: This special castor oil-based formula will not break down synthetic prosthetics like a petrolatum or mineral oil based formula would. Mehron's Mask Cover is the first choice of professional special effects artists for use on latex, rubber and foam prosthetics. Product and color selections were developed in conjunction with Academy Award winning makeup artist Dick Smith.

Application: Apply with a sponge using a "patting" or "stippling" technique, not a stroking motion. Set with Colorset Powder, then apply cream makeup for final application to blend with skin tone.

II) Extreme Beauty

LIPS



A) L.I.P Color Cream - New!

Item #103N

Description: L.I.P Creams are Mehron's new fashion forward Luxurious, Intense, Pigment lip creams. Luscious, hydrating, full color lip color for a kiss that is creamy, conditioning, and long wearing. Available in a wide variety of popular shades plus 8-color palette collections.

Application: Apply with brush or fingertip. For a glossy look apply Glosstone before or after L.I.P Cream.



B) L.I.P Pencils - New!

Item #206N

Description: L.I.P Liner Pencils are the perfect compliment to Mehron L.I.P Creams and Glosstones. The pencils have a long lasting creamy makeup that enables you to define your lips without color bleeding or feathering. Available in a variety of vibrant accent colors.
Application: Apply by drawing an outline from the center of your upper lip, gradually reaching the outer corner, following the edge of your natural lip line or the way you want your lips to appear.



C) Glosstone™ - New Formula!

Item #126

Description: Lips and cheeks will glow bright with sheer, vibrant tints that provide just the right amount of coverage and add a highlighting tone that will complement all skin complexions. Contains aloe vera for treating dry lips and Vitamin E for protection from environmental damage.
Application: Apply with brush or fingertip. For a colorful look apply L.I.P Cream before Glosstone.



D) Lip Stick

Item #LSC

Description: Creamy high fashion Lip Stick in bold colors.
Application: Match our fantasy Nail Polish or use to complement any costume.

EYES



A) E.Y.E Cream - New!

Item #107N

Description: E.Y.E Creams are cream shadow/liners that are guaranteed to make you gorgeous as they line, shade, and contour your eyes. Mix and match, or go as sheer or as dramatic as you like with layerable, buildable color. E.Y.E Creams are a soft, supple, cream-to-powder formula that provides long-lasting color. The ultra-pigmented shades have a well-balanced, lightweight texture.
Application: Apply with brush or finger. The soft-blending formula can be worn alone or layered under powder eye shadow for long-lasting color and depth.



B) E.Y.E Liner Pencil

Item #115

Description: Professional semi-soft lining pencil.
Application: 7" pencils for eye lining and outlining, redefining and darkening eyebrows, and creating aging effects. Widely used in theater, stage, TV and beauty.



C) E.Y.E Lashes - New!

Item #225

Description: E.Y.E Lashes are the most dramatic way to add glamour to your EXTREME BEAUTY look. Mehron's stylish, high quality, hand-made lashes help you push the fashion envelope and create intrigue that will get you noticed. Whether you wear them every day or on special occasions like important dates, parties, photo shoots or fashion shows, wearing artificial eyelashes adds style and sophistication to your look. Lashes scream "notice me".
Application: E.Y.E Lashes may be worn full width and length for the most bold fashion statement or trimmed for adding a subtle accent on the outer corners of the eye. When handled carefully, eyelashes may be reused up to 10 times. Apply using AdGem non-latex adhesive which is sold separately.



D) E.Y.E. Powder

Item #207

Description: Velvety smooth pressed powder eye shadows which never cake or crease and blend easily and evenly to create dramatic looking eyes for stage, screen and beauty. Matte colors are excellent choice for HDTV since there is no mica or pearl to cause unwanted reflective sparkle or feedback. Available in a wide range of matte shades and fashion-forward pearls plus 8-color palettes.

Application: May be applied wet or dry with a brush or foam sponge applicator.



E) Precious Gem Powders

Item #203

Description: Precious Gem Powders are a high luster, pigment infused loose powder that will add drama and intensity to your EXTREME BEAUTY look. They can enhance your eyes, lips, cheeks and skin. These rich sparkling powders are made with a blend of soft, micronized, silky powders that can be applied from head-to-toe for any occasion. May be used alone for a subtle yet colorful sheen. They can be used for everyday makeup, proms, runway, print, theater, dance recitals, face painting and much, much more. Packaged in an easy-to-use shaker top container to control just the right amount of powder. Available in 12 birthstone colors plus Black Onyx.

Application: Use dry or combine with Mehron Mixing Liquid to form a water resistant metallic finish that dries completely.



F) Mascara

Item #209

Description: Mascara is a creamy, water-resistant formula that enhances your eyelashes without clumping or caking. Our Mascara has proven to be a superb performer and has been used on stage and in the movies for decades.

CHEEKS



A) CHEEK Cream - New!

Item #104N

Description: Smooth, long lasting cheeks accents are achieved with CHEEK Cream. Creams are concentrated to make them easy to use for contouring and highlighting, the cheeks. These CHEEK Creams are made to provide a smooth application over both cream and powder foundations.

Application: Can be applied using just your fingers or a brush. Lightly dot the apples of your cheeks with the cream blush. Let the product melt into your skin, and blend outward in short strokes until there is no more outline. CHEEK Cream is buildable, so if it's too sheer for you, go ahead and repeat the process until the color payoff is satisfactory.



B) CHEEK Powder

Item #202

Description: Specially treated talc combined with select pigments enhance our pressed-powder dry rouge formula for unsurpassed longevity and vibrant color. Matte finish, non-reflective. Perfect for HDTV, stage and beauty applications. Available in a range of popular shades plus 8-color palette collection.

Application: Apply with a powder brush or makeup brush on cake or cream makeup.

NAILS



A) Nail Polish

Item # NP/#NPC

Description: Full size, fashion Nail Polish in a range of bright colors. Colors coordinate with our fantasy Lip Sticks or mix and match each nail for a custom look.

Application: Apply directly on nails with applicator brush included in cap.

III) Clowning



A) Mehron Clown White

Item #130

Description: Consistency in quality and coverage are what make this the first choice of professional and amateur clowns and mimes. This super smooth, ultra white cream covers efficiently without dryness or cracking, even under the most demanding performance conditions. It is not unusual for a clown to apply makeup at 7:00 a.m. and perform in the same makeup until 11:00 p.m. To meet this demanding application, Mehron uses a high concentration of titanium dioxide and formulates the base to a smooth, easy to work with consistency. Available in a variety of convenient sizes.

Application: Warming Clown White in the palm of the hand before dabbing onto the skin will make the product very easy to spread and smooth out. Use a "patting" technique to eliminate streaking and prepare the makeup for powdering. Set with Colorset Powder.



B) Clown White Lite

Item #131

Description: Mehron's Clown White Lite offers an alternate consistency to traditional Clown White. The Clown White Lite formula is based on "European" style Clown White. Greaseless and talc-free, Clown White Lite is Vitamin E enriched and contains silicones to create a light weight, firm cream makeup which can be used sparingly while still providing a bright white finish. Available in a variety of convenient sizes.

Application: Use when a lighter application is required. Perfect for adult clowns where a thinner, smoother makeup can be easily worked into creases and folds in the skin. Set with Colorset Powder.

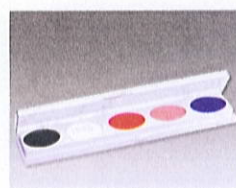


C) Clown Pink

Item #132

Description: Mehron's traditional clown base in a rich, opaque pink shade. Popular among female clowns for creating highlights and a rosy glow.

Application: Apply with foam applicator or fingertips. Set with Colorset Powder.



D) Clown Makeup Palette

Item #406

Description: This is the Clown Makeup Palette most often used by clown schools to train new clowns in the art of clown makeup. Includes the necessary colors for creating White Face, Auguste, Character and Tramp/Hobo clowns. Makeup in the palette is Clown White and #102 Foundation Greasepaint in R/B Red, Blue, Auguste and Black.

E) ProPencils

Item #114S Slim and #114J Jumbo

Description: The premier makeup pencil today, offering unparalleled uniformity and rich bold color. Silky smooth, ultra creamy pencils glide on with ease. Enclosed in a sturdy composite casing, the pencils come in both slim and jumbo size. They sharpen beautifully with the Dual Sharpener. Black and Red are by far the most popular colors being used for outlining or creating the mouth, eyes, etc. Yellow, Blue, Green and Auguste are typically used as a personal preference in creating highlights or in designing the clown's unique features.

Application: Draw designs or outline shapes to indicate placement of makeup. Sharpen with Mehron's Dual Sharpener #114DS. Hint: For better point, put pencil in freezer for a few minutes before sharpening. Set finished makeup with Colorset Powder.

F) ProPencil Dual Sharpener

Item #114DS

Description: The Dual Sharpener™ minimizes waste by gently peeling ribbons from the tip of the non-wood casing while forming the perfect point.

G) Grease Makeup Crayons

Item #IGC

Description: A castor oil and wax-based cream makeup in a stick form.

Application: Ideal for Clowning and Halloween application. These crayons are cream based and will need to be set with Colorset Powder.

H) ProFACE - No Sweat

Item #PF-NS

Description: A clear, fragrance-free liquid anti-perspirant formula, for use on the skin prior to makeup application, to retard sweating. No Sweat will allow makeup to remain longer lasting under stressful performance conditions.

Application: Sponge a light coating of No Sweat to the skin on areas prone to high perspiration. Allow to dry thoroughly before proceeding with the application of the makeup product.

IV) Face & Body Painting

A) Paradise Makeup AQ™

Item #800

Description: Mehron's world-famous, premium quality, water based face and body painting product. The preferred choice of award-winning artists around the globe. Available in a wide range of richly pigmented beautiful colors for creating designs from head-to-toe. The 40 gm container is the perfect size and shape for the professional face and body painter. The large surface of the cake allows for easy use with a sponge or large body brush. Can be easily stored in a handy twelve color palette for quick, well organized set up. Available in a wide range of popular colors plus 8-color and 30-color palettes in the refill size and 12-color palettes of the full size.

Application: Paradise is activated with a small amount of water. Moisten the sponge or brush and work the surface of the cake into a rich spreadable cream. Some colors require a little more water, some a little less. Just a little practice will bring beautiful results.

B) Paradise Makeup AQ™ - NEW Single Refills

Item #801

Description: Refill size cake comes in a 7 gm pan that can be exchanged quickly in any eight color palette (item #808). Each ready made palette comes with eight colors. Available in Basic, Pastel, Tropical & Metallic. Empty palettes are available so that the artist can create a custom color palette from the 32 available colors.

Application: See professional size.



C) Paradise Brushes

Items #810 - #833

Description: Paradise Brushes are unsurpassed in quality. They are presented with custom length acrylic handles, luxurious bristles and durable ferrules. They are fabricated to the exacting design specifications of world famous face painter and instructor, Jinny - Makeup Artist.



D) Paradise Glitters

Item #827

Description: Shimmering full size (.008) polyester based glitter particles that produce bold dramatic effects. This glitter is larger than GlitterDust and is available in a range of vibrant colors.

Application: Glitters can be sprinkled on or pressed onto Paradise Makeup AQ™, depending on the desired effect.



E) Detailz™

Item #804

Description: Indispensable liquid color concentrate specifically created for detail work. Each bottle comes with its own special applicator that provides the artist with the ability to add those fine details that make each design unique and outstanding.

Application: Each bottle comes with its own special applicator that allows you to create intricate designs, outlines, fine lines, round accent spots and dots in various sizes.



F) Jinny Makeup Artiste DVD - Vol. 1.

Item#DVD-1

Description: Are you looking for fast and fabulous face painting ideas that look like they took a long time? Jinny has the answer in this first DVD in her self-titled series. She has created a variety of new designs and tattoo ideas for boys, girls and adults. Most can be painted in just a few strokes, but the results have that 'wow' reaction. With Jinny's instruction and the right tools, you can easily master these designs and develop your own creative style.

Running time: Approx. 60 mins

Release date: 2003

Language: English and French



G) Jinny Makeup Artiste DVD - Vol. 2

Item#DVD-2

Description: This is volume two in the Jinny Make-up Artiste series. This DVD will help you develop more creative and artistic ideas for your painting. If you love the abstract style but are occasionally unsure how to get started, the content of this DVD will most certainly help you along. In addition to wonderful abstract designs, you will also see some of Jinny's favorite characters - a leopard, a dog, and a monster, plus other colorful mask designs. You'll find a new separate section called "Techniques" on this DVD. This section contains detailed information on brush handling and manipulation, sponge handling, blending, double loading of brushes and other special techniques usually only covered in the most advanced classes.

Running time: Approx. 90 mins

Release date: 2005

Language: English and French



H) Jinny Makeup Artiste DVD - Portfolio Part 1

Item# DVD-PF

Description: You will enjoy this slideshow including more than 150 photos from Jinny's artwork! Get Inspired!



I) LUX Airbrush™ - NEW!

Item #211

Description: A long lasting, pleasant smelling matte airbrush liquid makeup, free of alcohol. Available in a highly pigmented, concentrated range of colors, created using a base made of vitamin enriched green tea. Formulated for great coverage and to be gentle to the skin, LUX dries quickly and provides a waterproof, transfer resistant finish. Contains a globally accepted preservative system that is formaldehyde-free, paraben-free and halogen-free.

What makes LUX different is that it is made with a base of Japanese Green Tea Extract which is an anti-inflammatory, anti-oxidant, and anti-irritant. It includes aloe vera which is a proven treatment for damaged skin and Vitamin E which is a strong antioxidant and skin protector from environmental damage. Our extract blend imparts soothing and healing properties using a proprietary blend of Lemongrass, Ginseng, Chamomile, Comfrey and Cucumber. When combined with panthenol, a Pro-Vitamin B5 moisturizer which improves the skin's moisture balance and prevents dryness and water loss, LUX is the world's most advanced airbrush makeup formula.

Application: Shake well before using. Use suitable airbrush equipment set to safe pressure levels. Apply colors in smooth, even layers. Allow to dry between colors when overlapping shades. Remove with warm soap and water.



J) Over-the-Rainbow™ Crayons

Item #6WS

Description: Six brilliant, water-activated crayons which provide outstanding coverage for quick and easy fun face painting. Primary colors plus black and white.

Application: Dip crayons in water to activate color. Great for outlining, tracing stencils and filling in designs. Ideal for children to use in painting each other. The plastic sleeve will keep the fingers clean. Wash with soap and water to remove.



K) WaterWorks™

Item #WWC

Description: Water soluble, color rich makeup in a convenient flip top case.

Application: WaterWorks offers the same superior coverage and easy soap and water removal as Over-the-Rainbow! Great for teachers and parents who are doing casual, fun face painting.



L) Fantasy F-X™ Party Palette

Item #FFX-PP

Description: Our most popular fun face paint in a convenient artist's palette of five versatile colors. Fantasy F-X cream colors in convenient refillable pots.

Application: Brush on our safe, non-toxic formula. Removes easily with soap and water.



M) Henna Style Tattoo Cosmetic "Ink" - NEW!

Item #112

Description: Henna Style Tattoo Cosmetic "INK" is safely made with quality ingredients that are water resistant and will not rub off. It can be used for temporary tattoos in the tradition of Henna Art or for crafting tattoos for performers in theater, television or film. Can also be used for face and body painting. This non-tacky cosmetic "ink" offers excellent coverage and is sold in 5 oz bottles.

V) Special Effects / Halloween / Movies



A) Barrier Spray™

Item #145

Description: A clear liquid setting spray that sets makeup designs and can protect sensitive skin from makeup latex and other adhesives. Great for all makeup applications such as Modeling, TV, Stage, Clowning, Face Painting, Halloween, Special Effects and Photography. *Application:* As an under makeup protection, after skin has been cleansed, mist Barrier Spray over skin and let dry. This will help to keep sweat from coming through the makeup. May also be used to seal the makeup after Colorset or other setting powder has been applied. Barrier Spray can be used to seal and finish many different types of makeups. Also prevents makeup from rubbing off on costumes.

B) Blood Products



1) Stage Blood

Item #152

Description: Syrup-based blood for fresh blood effects. Available in Bright Arterial or Dark Venous versions. Available in a selection of sizes.

Application: Apply to the skin. Stage Blood will not dry, so the blood will continue to drip. Ideal for blood capsules and mouth application (Product may stain clothing so pre-test).

2) Coagulated Blood Gel

Item #151

Description: Thickened syrup-based blood "paste" for coagulated or scabbing effects.

Application: May be applied to any open wound effects (created from Latex, Modeling Putty/Wax or 3-D Gel). Coagulated Blood will not drip and will stay moist.



3) Squirt Blood

Item #150

Description: A water-based blood that squirts, gushes and splatters. Available in Bright Arterial or Dark Venous versions.

Application: May be used in appliances with tubing and a pump bulb to project Squirt Blood. Squirt Blood will run and eventually dry on skin and can be used anywhere for a realistic effect.



C) Crepe Hair

Item #120

Description: 12" tightly woven braids of synthetic wool. Braid will straighten out to three times its length.

Application: Straighten braid out by ironing between pieces of wet fabric. Crepe Hair can be glued directly to the skin with Spirit Gum or Latex. It should be applied in layers for a realistic beard. To comb out, use a wide tooth comb or pick. Crepe Hair can be "painted" with Liquid Makeup or Hair White. See available instruction booklet for detailed application instructions.



D) Extra Flesh™

Item #141

Description: A wax compound mixed with fibrous material.

Application: Apply directly to the skin and smooth out the edges. The fiber allows the edges to blend into the skin easily. Great for making warts, scars, etc. No adhesives needed. Can be powdered down or use Fixative "A" to seal and remove tackiness.



E) Modeling Putty/Wax

Item #140

Description: A pliable combination of traditional nose putty and modeling waxes which, after sculpting, will keep its molded shape.

Application: "Knead" Putty/Wax in hands until it softens. Form into the basic desired shape. Apply Spirit Gum to skin area where Putty/Wax is to be applied. Apply Putty/Wax and form into desired shape, blending edges into the skin. Seal with Fixative "A" before applying makeup. Remove by peeling off and using Spirit Gum Remover to remove the Spirit Gum. HINTS: You could use a little makeup remover to help smooth the edges of the Putty/Wax into the skin prior to applying the Fixative "A". Also, for creating deep flesh wounds, seal the Putty/Wax with a layer of Liquid Latex. When cut open to create the wound, the latex will look like skin while the Putty/Wax appears as muscle and inner tissues.



F) Modeling Wax

Item #139

Description: A blend of microcrystalline wax and iron oxides.

Application: Use to build up areas for special effects. Seal with Fixative "A", then apply latex for a final skin coating. Often used as eyebrow block.



G) Stainless Steel Putty Spatula

Item #149

Description: A sturdy metal modeling tool for applying and forming wax. Double ended for versatility.



H) SynWax™

Item #147

Description: A synthetic wax which is easily manipulated to form cuts and other molded shapes.

Application: Apply directly to the skin. Blend edges with a little mineral oil. Blot off the oil and apply cream makeup. Wax stays flexible and is great for eyebrow block and injuries located on moving body parts like the face and joints. Seal with Fixative A.



I) Fixative "A"™

Item #144

Description: Fixative "A" is a clear liquid plastic sealer. Available in convenient sizes.

Application: Apply as a protective sealer over Modeling Wax and Putty/Wax constructions before applying makeup. Can be used to seal intricate designs, making them appear like tattoos. Remove with Spirit Gum Remover.



J) 3-D Gel

Item #142

Description: Gelatin-based special effects product for creating realistic skin and prosthetic pieces. Available in Flesh and Blood Red colors, in 1/2 oz. and 2 oz. bottles.

Application: Heat container in hot water until gel is liquefied (test temperature before applying to skin). Apply to skin using fingers or makeup brush. Will cure to rubbery consistency. Any type of makeup may then be applied to complete the effect. Remove by peeling off and washing the skin with warm water. HINTS: May be colored with Mehron's Liquid Makeup or Fantasy F/X™ makeup while gel is liquefied. Applying makeup will remove any remaining tackiness after cured with Fixative "A". Using the 3-D Blood Gel can create realistic blood effects.



K) Hair White / Hair Silver

Item #119 / Item #119S

Description: Water washable liquid for graying hair of all types.

Application: Can be brushed or sponged into the hair for a silver or white effect. As the color dries, it will absorb the hair color and become darker. A second or third coat may be needed to be applied with a sponge. For best results, apply additional coats over a smaller percentage of the previous coat to give realistic variation of hair color. The Hair Silver can be used on light colored hair with additional coats of Hair White to give a silver-white look. Available in 1 oz. and 9 oz. size.



L) AdMed Liquid Adhesive

Item #355

Description: Newly reformulated Mehron AdMed Adhesive. Strong clear synthetic adhesive bond that doesn't break down with sweat for latex prosthetics, such as bald caps or ears.

Application: Apply to the skin and to the appliance, wait until tacky, then press together. Ideal for bald caps or other prosthetic appliances. Remove with Medical Adhesive Remover.



M) AdMed Adhesive Remover

Item #355R

Description: A special formula designed to break down and remove Medical Adhesive.

Application: Apply to the area and gently rub the remover into the glue until it dissolves. Clean up with soap and water.

N) Pro ColoRings™



1) Bruise ColoRing

Item #505-B

Description: Cream makeup used to create a bruise effect of any age. Bruise colors start with Bloody Rose and progress around the ring as the bruise gets older.

Application: Begin with Bloody Rose to create a fresh hit and add Burnt Maroon and Midnight Sky to create an older bruise. Spanish Olive and Maize Yellow are used to create a healing bruise. When creating an older Olive/Yellow bruise, set with Colorset Powder to remove the shine.

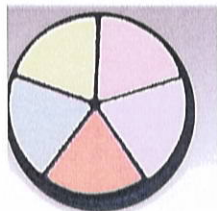


2) Concealer ColoRing

Item #505-C

Description: Cream makeup used to conceal or correct trouble areas.

Application: The concealer can be used on top of or underneath the base makeup. Just pat or stipple on the areas that you wish to cover. Can also be used to highlight (under the eye, above the cheekbone, etc). Lightly powder with Colorset Powder to remove shine.



3) Neutralizer ColoRing

Item #505-N

Description: Cream makeup used to neutralize skin tone discolorations.

Application: Apply Neutralizer under base makeup. Pat or stipple the appropriate color to neutralize the trouble areas. To correct redness – apply Mint Buff. For sallow or yellow undertones – use Lilac Suede. To correct blue and blue/red complexions – apply Tawny Amber. As skin shades may vary, try different colors for the best results. Set Neutralizer with Colorset Powder before application of any base color. Note: The base should be applied by stippling or patting – if the applicator is dragged across the Neutralizer, it may pull against the color or remove it.



O) Rigid Collodion

Item #204R

Description: Clear liquid which dries and puckers the skin to create the appearance of a scar. Available in convenient sizes.

Application: Using a brush, apply a thin line to "fleshy" skin. This allows the product to pucker the skin (if the skin is too tight, scar will not be as successful). For deeper scars, apply several coats after each previous one has dried. To create an old scar, use a medium brown pencil and lightly put color down the middle. Use a brush to spread and soften the color. To make a fresher scar, apply a pink color and then brush out. This will also eliminate any shine.



P) Specialty Powders

Item #105

Description: An ultrafine, loose powder to use for a cosmetic dirt or ash effect.

Application: Lightly dust on with a large brush. Available in Texas Dirt, Trail Dust or Charred Ash. The powder may be mixed with Mixing Liquid to form a muddy or oily consistency or it may be air brushed.



Q) Spirit Gum

Item #118

Description: An amber colored, alcohol/resin liquid adhesive solution. Available in a variety of sizes.

Application: Use to apply Crepe Hair mustaches and beards, wigs, fake noses and bald caps. Remove with Spirit Gum Remover.

R) Matte Spirit Gum

Item #118M

Description: Spirit Gum without the shine.

Application: Use under hair pieces, side burns etc. Remove with Spirit Gum Remover.



S) Spirit Gum Remover

Item #143

Description: A clear, specially developed solvent for removal of Spirit Gum. Gentler to the skin than most other removers.

Application: Apply to the desired area and gently rub into the glue until it releases; then wash with soap and water.



T) Sweat & Tears

Item #154

Description: Clear liquid that creates the appearance of moisture beads on the skin.

Application: Apply with a sponge to the face, using a patting or stippling motion to leave "beads of sweat". More applications will leave bigger beads. This product will not dry, so it's good for creating a sweaty look for a long period of time (like a photo shoot). A drop may be applied to the corner of the eye to create a tear.



U) Tattoo Cover

1) Tattoo CoverRing

Item #505-T

Description: A five-color palette of our revolutionary new Tattoo Covers, a creamy formula designed to cover the darkest tattoos, birthmarks and other discolorations.



2) Tattoo Covers

Item #506-TC1, TC2, TC3, TC4 and TC5

Description: Individual containers of colors from the Tattoo CoverRing (see above).

Application: Choose the Tattoo Cover shade closest to skin tone and apply with a sponge using a patting, not a stroking motion. Set with Colorset Powder, then apply cream makeup over Tattoo Cover (again with a patting motion). If desired, stipple several skin tones of foundation over the area and add freckles to blend with the surrounding skin. For a matte finish, press Colorset Powder into final makeup design. Mist Barrier Spray over area to seal and protect.



V) Tooth F/X™

Item #TFX

Description: Safe, non-toxic, paint-on tooth color.

Application: Paint on dry tooth for desired effect. For best results, paint in small areas between the teeth to give the appearance of decay or chipped teeth. Available in Black, White, Nicotine/Decay, Gold, Spinach Green and Blood Red.

Removal: Can be removed with isopropyl alcohol or by brushing teeth with toothpaste.



W) Touch Up™ - Matte Finish Anti-Shine

Item #134

Description: A translucent formula that removes shine instantly.

Application: Dab off any excess moisture on makeup. Apply Touch Up and shine will disappear. May be used on bald spots and along a receding hair line. This product is perfect for photography, film and video.



X) Liquid Latex

Item #117

Description: Latex is used to create unusual skin textures or to apply Crepe Hair and prosthetics. Available in clear, soft beige, and sable brown. Available in a variety of sizes.

Application: Colorless when dry; may be covered with Mask Cover to design a character. Latex can be diluted to provide a nice age stipple texture. Latex Liquid requires no remover; simply peel cured latex from skin. Avoid getting latex into hair or on clothes. To protect sensitive skin, use Barrier Spray under latex.



Y) Bald Cap

Item # 146C

Description: This professional quality, full size Bald Cap is made from natural latex for a perfect fit. These caps are used by makeup artists worldwide for stage and screen performances. To finish the application of the Bald Cap use Mask Cover Makeup to blend the edges and match the character's skin.

VI) Professional Makeup Accessories /Trade Secrets

A) Glitter

A stage just wouldn't be a stage without glitter. These lightweight, fine particles of bright light add glamour to any type of makeup application on the face, hair or body. A little bit goes a long way by spraying sparingly for a subtle effect or generously for a more stunning look. Each glitter product is available in a range of popular colors.



1) GlitterDust

Item #127

Description: A fine glitter to be used in the hair or on the skin.

Application: GlitterDust is loose and requires a fixative to hold it in place. After applying cream makeup or body creams, press glitter into place. For use in hair, apply some hair spray and sprinkle glitter in before the hair spray dries.



2) GlitterWear

Item #128

Description: The same fine glitter as GlitterDust in a gel base for concentrated applications.

Application: Apply with a brush to the skin. The gel will evaporate quickly, allowing the GlitterWear to stay in place. Due to the quick drying, it stays on longer and doesn't rub off easily. Removes with soap and water.



3) GlitterSpray

Item #228

Description: Fine glitter in a pump spray bottle.

Application: Sprays into a fine mist that allows the glitter to be dispersed like a fine morning dew or fairy dust application. Can be used in the hair, on dresses, wedding veils, and balloons.



B) Metallic Powder

Item #129G and #129S

Description: Gold, Silver, Bronze and Copper Metallic Powder used to create dramatic designs.

Application: Use Mixing liquid to form a water "resistant" metallic finish that dries completely.



C) Mixing Liquid

Item #129M

Description: Liquid makeup base for use with Metallic Powders or airbrush makeup.

Application: Mix a small amount of Mixing Liquid with Metallic Powder to create a metallic liquid makeup. This can be applied by brush, sponge or air brush. Dries completely and washes off easily with soap and water.



D) AdGem™ - New!

Item #354

Description: Ad Gem is a safe, LATEX-FREE adhesive to use for all body decoration. This LATEX-FREE adhesive is a water based acrylic formula that is safe and comfortable providing the perfect amount of hold for glitters, jewels and other cosmetic accessories. It is in liquid form when dispensed from the tube and quickly changes to a rubber-like consistency when it is exposed to the air. AdGem is unique for its super strength grab that never lets go, even after a long night on the town or a long day on set. It has excellent water and moisture resistance. Available in a convenient tube that includes a bag of Swarovski Gems.



E) Aura Bronzing Gel - New!

Item #193

Description: A unique, lightweight bronzing gel for all over body coverage. Aura gives skin a beautiful, even, natural looking glow that mimics the look of a day in the sun without the damaging effects. Aura contains a super hydrating, skin smoothing extract blend of Lemongrass, Ginseng, Chamomile, Comfrey, Cucumber, Aloe Vera gel and Japanese Green Tea plus a generous helping of golden bronze shimmer. Use alone or mix into foundation for a natural, radiant glow. Complements all skin tones. Oil-free and paraben-free.



F) Velvet Finish™ Primer

Item #194

Description: Velvet Finish creates a perfect canvas for foundation and makeup application. Our enriched blend of vitamins and antioxidants creates the appearance of flawless skin. This unique formula contains ALOE VERA that soothes, protects, heals, softens and hydrates the skin and VITAMIN C and VITAMIN E, powerful antioxidants that help increase production of collagen and decrease the look of fine lines and pigmentation that are the result of aging.

Application: Use Velvet Finish after moisturizer and before foundation for complexion perfection. This skin soothing blend of anti-oxidants which can be worn alone or under foundation, works overtime to fill in fine lines and even skin texture. This oil absorbing formula also provides a matte look to the skin giving it the Velvet Finish.



G) Colorset Powder

Item #135

Description: A super absorbent, translucent formula perfect for setting any cream makeup.
Application: Apply liberally to a puff and press powder into the makeup to absorb excess moisture. Dust off excess with a powder brush.



H) UltraFine Powder

Item #136

Description: Finely processed, clump-free, antiperspirant powder for setting cream makeup.
Application: Apply like the Colorset Powder. Use the different colors for various applications. All colors use Neutral, flesh tones use Soft Beige and clowns use Ultra White. HINT: Use Barrier Spray over the finished powdered makeup. This will lift the powder haze, restore the color and seal the makeup.



I) Brush Cleaner

Item #300

Description: A blend of grease cutting solvents that clean and sanitize natural or synthetic brushes. Evaporates quickly allowing for fast reuse of brushes.
Application: Pour a small amount into a glass container, swish the brush back and forth, then wipe until clean on a cloth or paper towel. Do not allow the Brush Cleaner to get on paint surfaces since it may remove the paint. The remaining liquid may be poured back into the bottle or absorbed into a paper towel and discarded.



J) Stageline Makeup Brushes

Item# 310 - #340

Description: These Professional Makeup Brushes are designed for the Professional Makeup Artist but are affordable so that anyone can use them. They are made of golden nylon in a variety of sizes and tips for all forms of makeup application. The nylon bristles are flexible and easy to control and clean. They will last for years with proper cleaning and storage. The fine nylon bristles are securely anchored into their handle for long lasting value.



K) Foam "Hydra" Sponge Applicator

Item#121

Description: The Foam "Hydra" Sponge has been newly improved to have a smooth, pliable surface for an even application of Liquid Makeup. The easy to squeeze sponge allows for complete control and flexibility without absorbing makeup. Cleaning up is easy with soap and water.



L) Latex Sponge Applicator

Item #121L

Description: A smooth, closed cell foam sponge for applying cream makeup. Provides a smooth, even application.



M) Natural Sea Sponge Applicator

Item#122

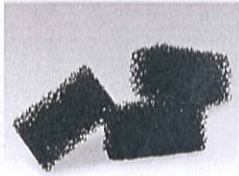
Description: Our Natural Sea Sponge is a great reusable makeup applicator. This sponge prevents streaking when applying cake type makeup. Natural Sea Sponges are the choice of professional makeup artists because it is easily cleaned with soap and water and returns to its natural shape and texture time after time.



N) Powder Puff Applicator

Item# 123

Description: Our professional quality Powder Puff is used to "press" Colorset Powder firmly into cream makeup. The Powder Puff evenly distributes all kinds of powders. Professional makeup artists use this smooth applicator to set their cream makeup, including Color Cups and Tri-Color Palettes with Colorset Powder.



O) Stipple Sponge Applicator

Item # 124

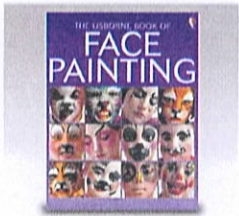
Description: The Stipple Sponge is an open weave, rough textured sponge that is used to create effects like beard stubble for a Tramp or Hobo Clown. The Stipple Sponge is used to create various stubble effects for theatrical makeup, but can also be used to blend makeup. Stipple Sponge can also be used by special effects makeup artists to create a broken blood vessel look, texture on aliens or other creatures. The sponge is a useful addition to any makeup kit and come in a pack of three sponges.



P) Practice Head

Item# HEAD

Description: Run out of willing faces? We have the answer – Mehron's Face Painting Practice Head. Guaranteed to hold still, not rub his or her eyes and never run out of patience. This professional quality, washable practice head is the ideal learning tool to perfect face painting basics, practice specific techniques, test new makeup products and create your own unique designs.



Q) The Usborne Book Of Face Painting

Item# Book-1

Description: Learn how to transform people into animals, monsters and clowns, or decorate faces with flowers, exotic scenes and stylish designs. The step-by-step instructions and technique tips mean even the beginner can be pleased with their results.



R) Makeup Removers and Moisturizers

1) Makeup Remover Lotion

Item #199

Description: A silky smooth lotion that breaks down and lifts creams and grease makeup quickly and easily, leaving skin feeling very soft.



2) "E"nriched Cold Cream

Item #100

Description: A unique Vitamin E enriched cold cream that removes cream and grease makeup and simultaneously moisturizes, softens and soothes skin.



3) Makeup Remover Cream

Item #101

Description: A fine cleansing cream with quick penetration properties for fast removal of cream and greasepaint makeup.

Application: Apply one of the above removers to the makeup and rub in with fingers or a cloth. Clean up with soap and water.



4) Xtra Gentle Eye Makeup Remover

Item #198-4

Description: A very gentle remover lotion that works on waterproof mascara and eyeliners.

Application: Works best when poured on a cotton pad.



5) Soothing Oil-Free Moisturizer Lotion

Item #197-4

Description: A soothing lotion that restores the softness of the skin with Vitamin E, Aloe and other gentle ingredients in a fragrance free formula. Contains no oil or waxes.

Application: This fragrance free hand and body lotion can be used by anyone anywhere on the body.



6) Nice & Clean Makeup Remover Cloths

Item #196

Description: These makeup remover cloths are pre-moistened for removing makeup from your face when you are on the go. They are portable, disposable cloths that are ideal to carry with you. The Nice and Clean Makeup Remover Cloths are individually packaged making them ideal for makeup removal after class, plays or rehearsals.



S) Brush Holder

Item #NBH-01

Description: Accommodates up to 15 long handled brushes and secures and protects them for travel. Cleverly folds to create a handy, convenient standing brush holder on your makeup table. Does not include brushes.

VII) Makeup Kits

Educational Makeup Kits



A) Celebré™ Makeup Kit

Item #CPK

Description: Unisex - With Seven Base Colors Each. This highly pigmented, silky, matte cream makeup glides on easily with full coverage for theater, film, video, and photography application. Celebre is gentle to sensitive skin and is free of fragrance, oils, beeswax and isopropyl myristate.



B) All-Pro Makeup Kits

Item #K110/400

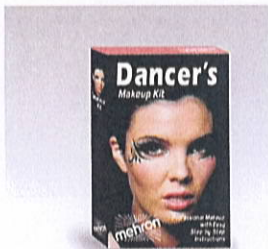
Description: Featuring Your Choice of StarBlend™ Cake or CreamBlend™ Stick Makeup. StarBlend's unique formula provides true colors with effortless application and easy blending for shadows, highlights and special effects. It is also non-streaking and perspiration resistant. CreamBlend Stick delivers exceptional coverage and smooth, easy blending with a non-greasy feel. CreamBlend's unique formula of premium ingredients is packaged in a convenient precision made swivel case.



C) Mini-Pro Student Makeup Kit

Item #KMP

Description: Each "Mini-Pro" kit includes two base colors of Mehron's CreamBlend Stick Makeup. This allows for greater flexibility in matching and creating varying skin tones. From "CreamBlend" to the full size makeup brush, "Mini-Pro" features the same products used by makeup professionals the world over.



D) Dancer's Makeup Kit

Item #KMP-DNC

Description: All-inclusive Dancer's makeup Kit includes all of the vital cosmetic tools needed to create the recital look. It comes with an eight-page step-by-step pictorial instruction booklet, created by makeup artists for the American Ballet Theatre, to help dance teachers and their students create an innovative look for every performance.

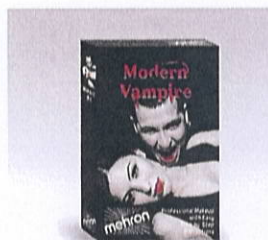
Halloween Makeup Kits ~ New Packaging Designs!



A) Tri-Color Palettes (In a variety of characters)

Item #403C

Description: Each of our Tri-Color Palettes contains three colors of our professional cream makeup to create the character pictured on the blister card. The blister card of each Tri-Color Palette presents a photo of the character along with detailed instructions on how to apply the makeup to create the character. Each blister card also lists items that will complement the character that you are creating. These Tri-Color Makeup Character Palettes are fun and easy to use. As with any professional cream makeup, Mehron's Tri-Color Palette makeup must be "set" with Colorset Powder. Remove with Makeup Remover.



B) Modern Vampire Character Kit – NEW!

Item #KMP-MV

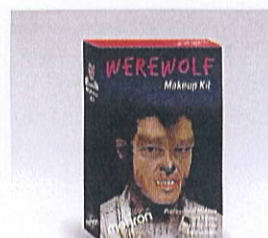
Description: The Modern Vampire Character Kit is inspired by the new Vampire Hits Twilight, and True Blood. These Vampires are not your mother and father's Vampires, they don't look and act like Count Dracula. This Modern Vampire Character Kit includes all the required makeup to become a Modern Vampire. Kit Includes step-by-step instructions, Celebré Professional Cream Makeup - Moonlight White, Latex Foam Sponges, E.Y.E Cream - Jet Black, Lip Rouge – Crimson, ProPencil Slim – Green, Coagulated Blood, Hair Gel, Vampire Teeth and Makeup Remover Wipes.



C) Evil J Villain Character Kit- NEW!

Item #KMP-EJ

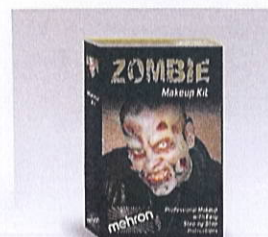
Description: Batman inspired Evil J Villain is so devious not even a caped crusader can easily apprehend him. You can transform into Evil J Villain at your next costume party. All of the required professional makeup is included: L.I.P. Color Cream - Velvet Rose, Paradise Makeup AQ – White, Color Cup – Black, Liquid Makeup 1 oz. w/Brush – Green, Rigid Collodion/Scarring Liquid .25 oz., Slim Pro-Pencil- Black, and Non-Latex Foam Wedge.



D) Werewolf Character Kit - NEW!

Item #KMP-WW

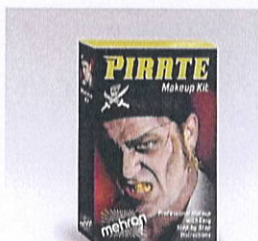
Description: Mehron introduces its NEW revamped Werewolf Kit! Kit includes: step-by-step instructions, Latex Flesh, Spirit Gum, Crepe Hair - Light and Dark Brown, Paradise Makeup AQ - Brown and Black, Small Brush, CreamBlend Foundation - Light Beige and Colorset Powder.



E) Zombie Character Kit – New!

Item #KMP-Z

Description: Mehron introduces its NEW Zombie Kit! Kit includes; step-by-step instructions, ProColoring Bruise, Colorset Powder, CreamBlend Stick - Green & Monster Grey, Flesh Latex Liquid, Hair White, Wedge Sponge and Coagulated Blood.



F) Pirate Character Kit

Item #KMP-P

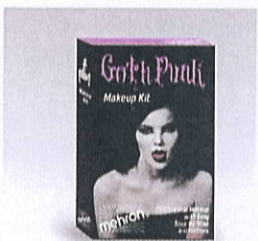
Description: This complete Pirate Character Kit includes all of the professional performance makeup you will need to portray the fiercest swashbuckler of the high seas. Kit includes: step-by-step instructions, Tri-Color Palette, Tooth F-X, Makeup Remover Cloth, Colorset Powder, non-latex Foam Wedge, Powder Puff, Eye Patch, Bandanna and No Holes Earring.



G) Bald Cap Kit

Item #KMP-BC

Description: Bald Cap Kit is a complete kit that enables you to transform any character into a bald character. Contains a professional bald cap plus all the necessary makeup, applicators and step-by-step instructions needed to become a realistic bald character. Kit includes: 5-color LM Makeup Palette (RMG), Colorset Powder, Powder Puff, Spirit Gum, Spirit Gum Remover, Latex Foam Wedge, Latex Liquid and Stipple Sponge.



H) Goth/Punk Character Kit

Item #KMP-GP

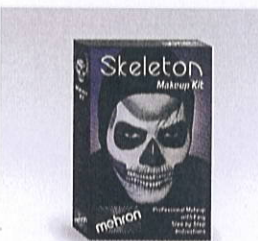
Description: The complete Goth/Punk Character Kit features all the essential makeup and accessories to create a Goth/Punk character for Halloween or any costume party. Although it is a Character Kit, you can add all the individuality you want when using the various makeup, nail polish, lip liner and applicators. Kit Includes: step-by-step instructions, StarBlend Cake Makeup - White, E.Y.E Cream - Black, Black Nail Polish, Black Lipstick, Temporary Black Hair Gel, Makeup Remover Cloth, Pencil Liner, Colorset Powder, Non-latex Foam Wedge, Powder Puff, No Holes Body Jewelry and No Holes Tongue Stud.



I) Blue Person Character Kit

Item #KMP-BP

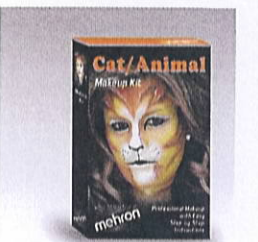
Description: This complete Blue Person Character Kit contains step-by-step instructions and all the essential makeup and accessories needed to become a Blue Person. Are you planning a Blue Man Play? This is the kit you need to turn each of your performers into a Blue Man. The kit includes: Bald Cap, Spirit Gum Adhesive, Spirit Gum Remover, Latex Mask Cover Makeup - Blue, Liquid Latex, Colorset Powder, Barrier Spray, Non-Latex Foam Wedges, Powder Puff and Makeup Remover Cloth.



J) Skeleton Character Kit

Item #KMP-S

Description: This complete Skeleton Character Kit contains all the professional makeup, applicators and accessories needed to create a Skeleton Character for stage, screen or party. Mehron has included step-by-step instructions, 5-Color Makeup Palette, Makeup Remover Cloth, Pencil Liner, Colorset Powder, Makeup Brush, Non-latex Foam Wedge, Powder Puff and Black Hood.



K) Cat/Animal Character Kit

Item #KMP-T

Description: This complete Cat/Animal Character Kit contains all the makeup, applicators, removers and accessories you will need to transform into a Cat or similar animal for costume activities or parties. Kit Includes: step-by-step instructions, 5-Color Makeup Palette, Makeup Remover Cloth, Pencil Liner, Colorset Powder, Makeup Brush, Non-latex Foam Wedge, Powder Puff and Whiskers.

Item #KMP-FR

L) Monster/Frankenstein Character Kit



Description: The Monster/Frankenstein Character Kit has all the professional makeup essentials you need to transform yourself into Frankenstein or the Monster of your choice. With the help of professional makeup artists, Mehron provides you with step-by-step directions that will enable you to apply this makeup like the pros. This Makeup Kit is perfect for school stage productions or Halloween Fun. Kit includes: 5-Color Makeup Palette, Modeling Putty/Wax, Colorset Powder, Flat Brush, Pencil Liner, Non-latex Foam Wedge and Powder Puff.

Item #KMP-W

M) Witch Character Kit



Description: The Witch is the Classic Halloween Character. This easy to use Witch Character Kit will transform even the most dazzling beauty into a wicked witch. Just follow the step-by-step instructions when applying this professional performance makeup and you will become the wicked witch of the East, West, North or South. Kit Includes: step-by-step instructions, 5-Color Makeup Palette, Makeup Remover Cloth, Pencil Liner, Colorset Powder, Makeup Brush, Non-latex Foam Wedge, Powder Puff, Spirit Gum and ugly wart.

Item #KMP-V

N) Vampire Character Kit



Description: Count Dracula will be surprised when you use the Complete Vampire Character Kit by Mehron to look just like him. The Complete Vampire Character Kit contains all the professional makeup, applicators and teeth that you need to become a classic vampire in the mold of Count Dracula. Mehron has included step-by-step instructions for applying your makeup the way they do on Broadway. Kit Includes: step-by-step instructions, 5-Color Makeup Palette, Pencil Liner, Colorset Powder, Makeup Brush, Non-latex Foam Wedge, Powder Puff, Vampire Teeth, Stage Blood and Makeup Remover Cloth.

Item #KMP-C

O) Clown Character Kit



Description: You can become a Clown with this complete Clown Character Kit by Mehron. For over 80 years, Mehron has been making our famous Clown White, the industry standard for the white clown face. There are times you may feel like a clown, now you can become one whenever you feel like it. Kit includes: complete step-by-step instructions written by professional artists, 5-Color Clown Palette, Colorset Powder, Foam Clown Nose, Pencil Liner, Stipple Sponge, Flat Brush, Powder Puff, Non-latex Foam Wedge and Makeup Remover Cloth.

Note: Look for all of our new, sleek, modern package designs, our range of product colors and shades, and latest new product additions at - www.mehron.com