



WEREWOLF



MAKEUP BY: JOE ROSSI & COMPANY MAKEUP, Providence, RI

FIG. 4

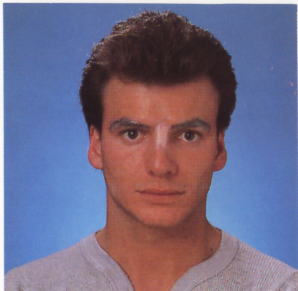


FIG. 1



FIG. 2

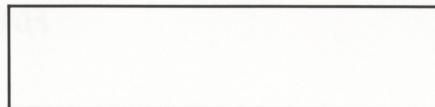


FIG. 3

**Basic Items Required:**

- No. 24 Makeup Base
- Black Makeup
- No. 10C Wolfman Brown Makeup
- Crepe Hair—Dark Brown or Black

- Spirit Gum & Remover
- Modeling Putty/Wax
- Colorset Powder
- Stageline Makeup Brush



# WEREWOLF MAKEUP APPLICATION

*Optional Items:*

- Rubber Nose
- Fang Teeth
- Powder Puff
- Makeup Remover Cream
- Stipple Sponge
- Powder Brush

- Apply a thin coat of Spirit Gum on areas where Modeling Putty/Wax will be applied. When nearly dry, sculpt desired nose shape with Modeling Putty/Wax (Figure 1). HINT: Rough sculpt shapes and blend edges into skin. Lubricate fingers with Makeup Remover Cream to smooth shapes. Texture surface with a Stipple Sponge.
- Cover entire face and sculpted shapes with No. 24 Makeup Base and powder with Colorset Powder.
- Create shadows with No. 10C Wolfman Brown Makeup. The “hard edge” of shadow can be deepened with Black Makeup. (Figure 2)
- Paint nose and upper lip line with Black Makeup.
- Begin applying Crepe Hair. The hair may be adhered with Spirit Gum. Start low on the face and build upward over the previous layer (Figure 3).
- Trim and style Crepe Hair.

**Hints:**

Crepe Hair can be straightened by loosening braid and wetting the hair. Stretch the unbraided strand and allow to dry (or force dry with a blow dryer). Avoid using thick pieces of hair.

**HAVE FUN!**