



future ewe

Mark Ferguson

A Thompson, J Young, G Kearney, A Kennedy, J Briegel, C Macleay, C Rosales



Department of
Agriculture and Food



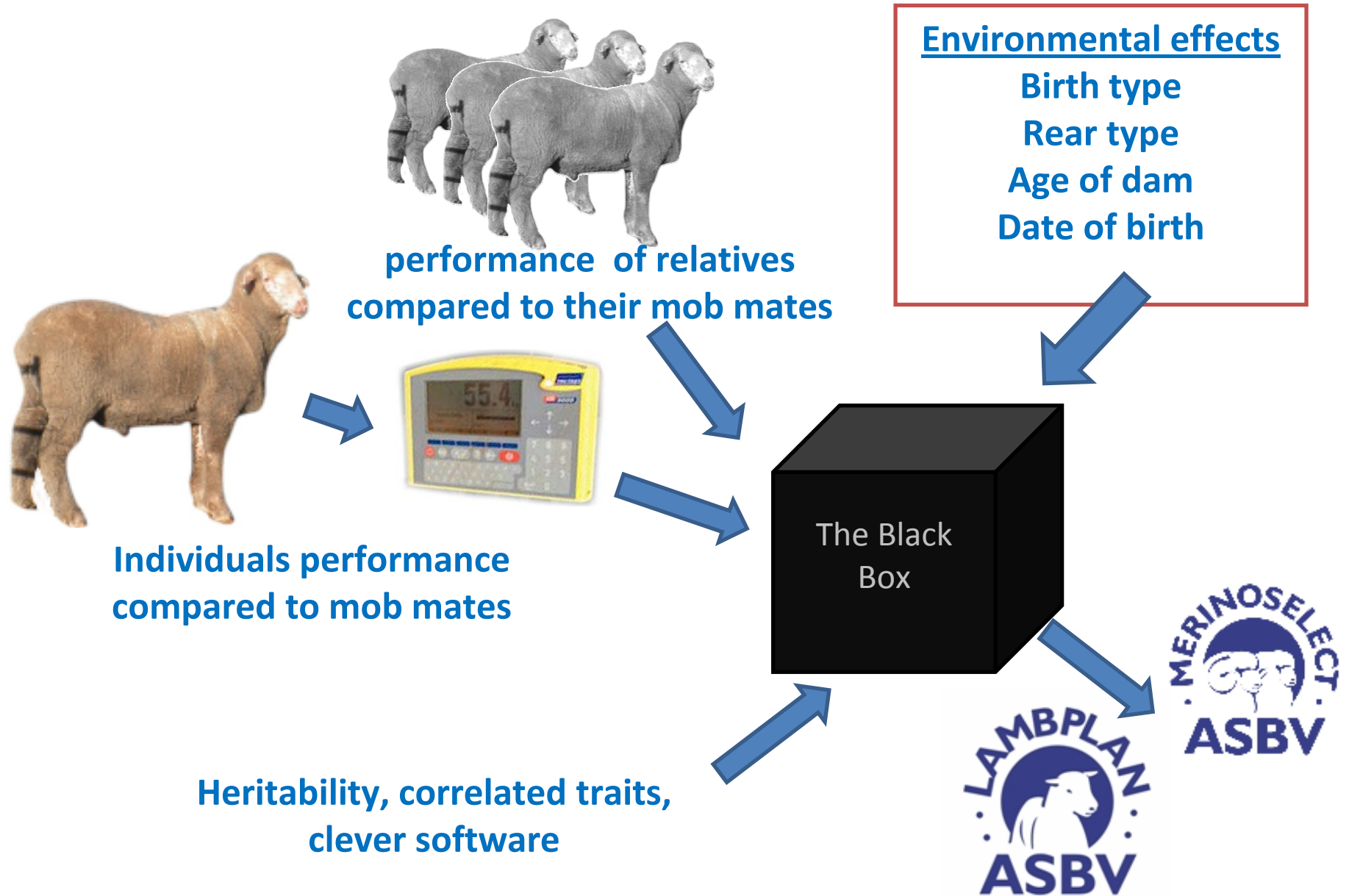
SHEEP CRC

Tools for the future

- * 2.7 million years ago our predecessors picked up a rock and turned it into a tool – the rat race began
- * Throughout history those who first had the tools had the upper hand
- * The tool to shape the future ewe is the Australian Sheep Breeding Value



What is an ASBV?





Growth



Reproduction



Wool



Easy Care



Growth



Reproduction



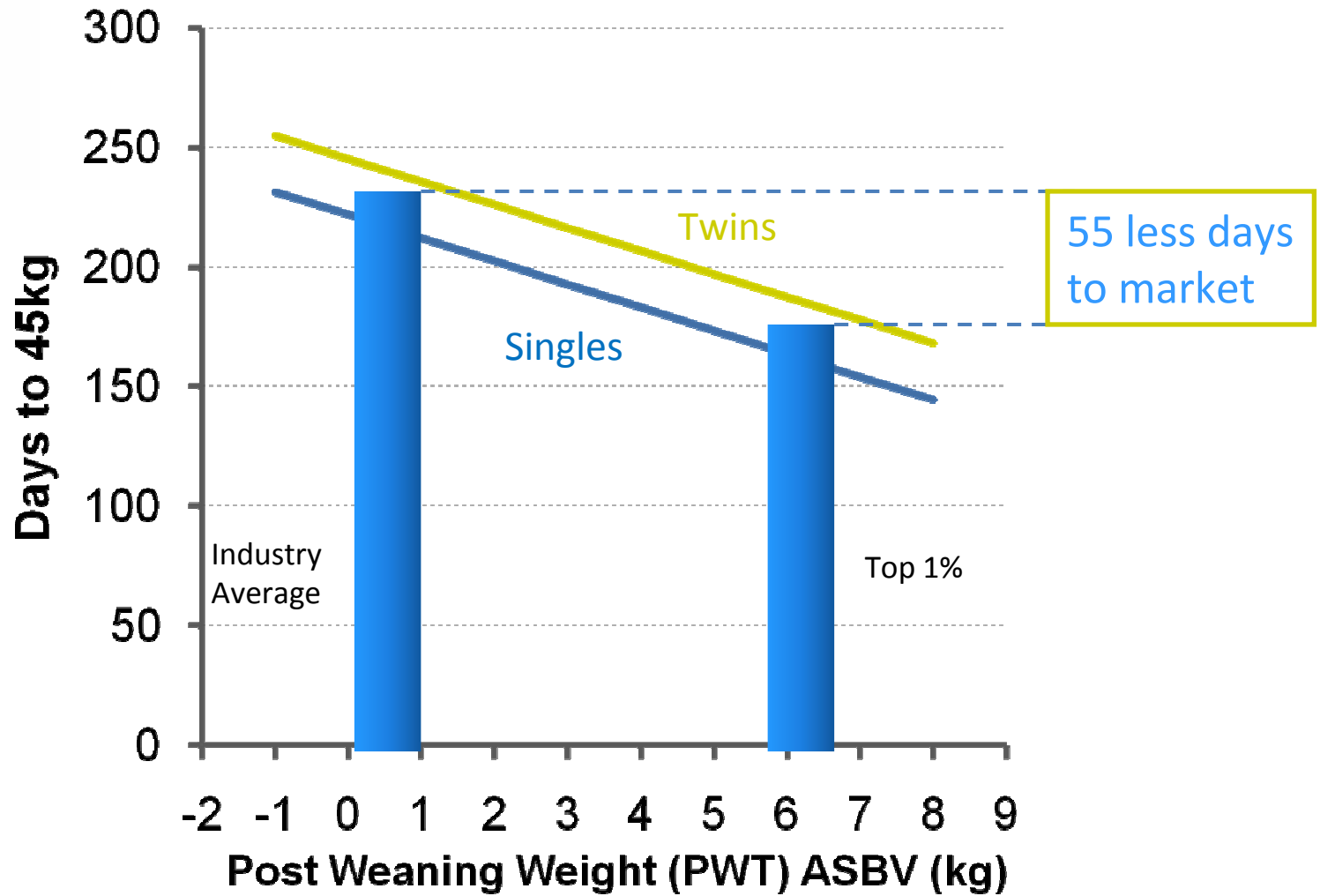
Wool



Easy Care

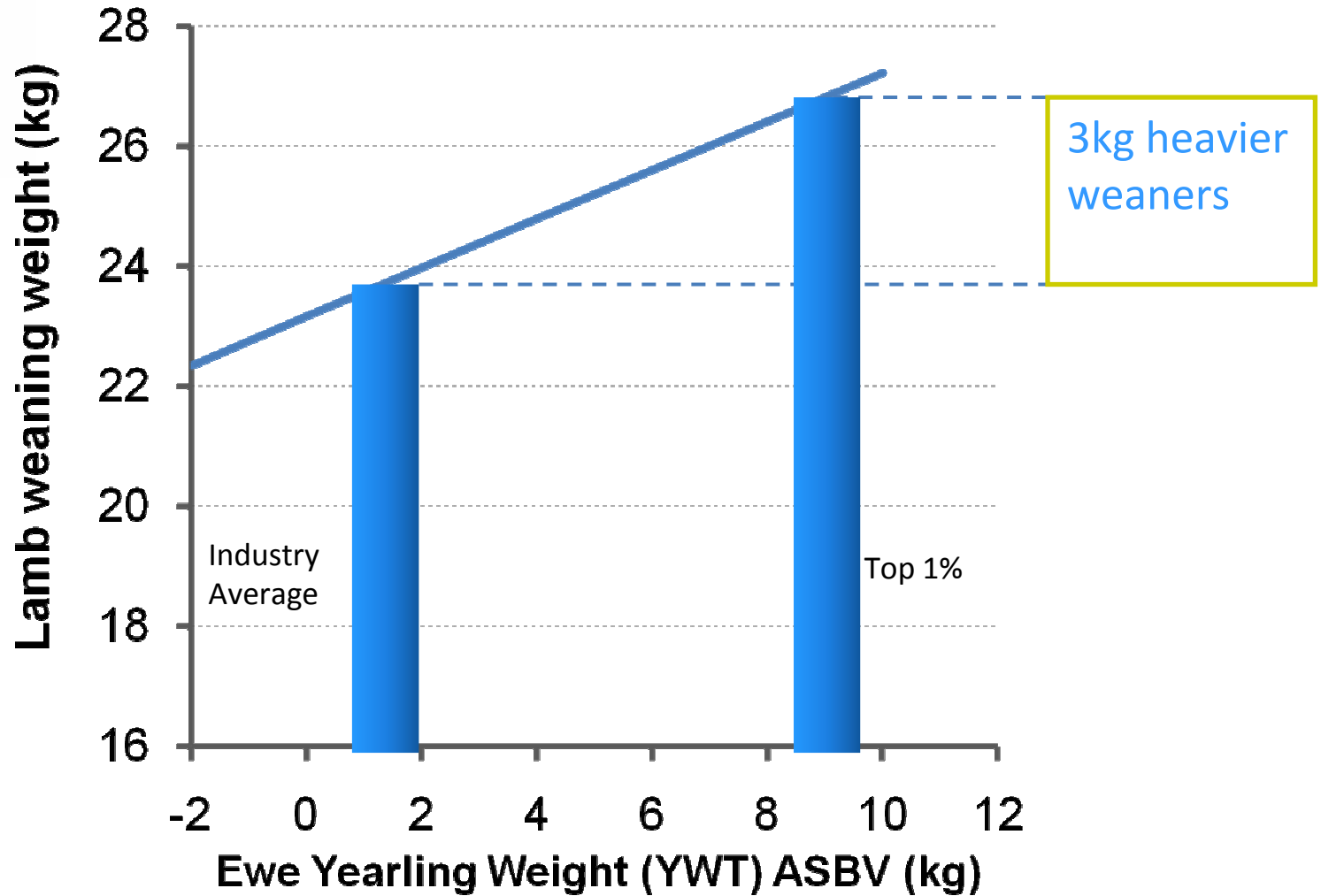


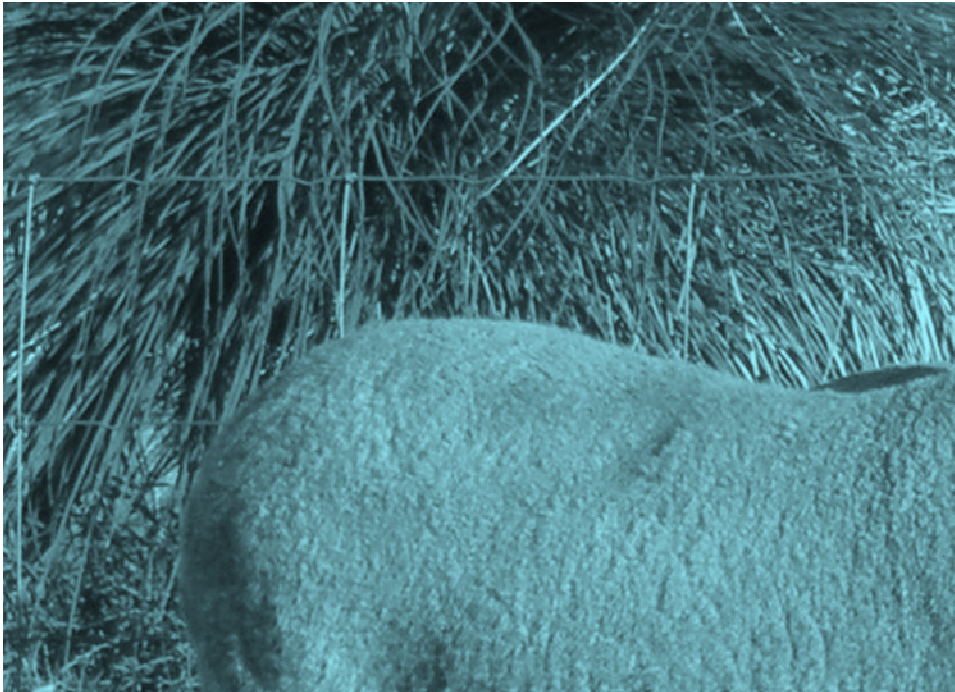
Growth





Growth





Reproduction



Wool



Easy Care



Reproduction



Wool



Easy Care



Reproduction

More than ever before
extra lambs are worth big bucks!!

	Lambs \$/kg	Ewes \$/head	Shippers \$/head	Value of an Extra Lamb
The Past	3.00	40	60	\$32



Reproduction

More than ever before

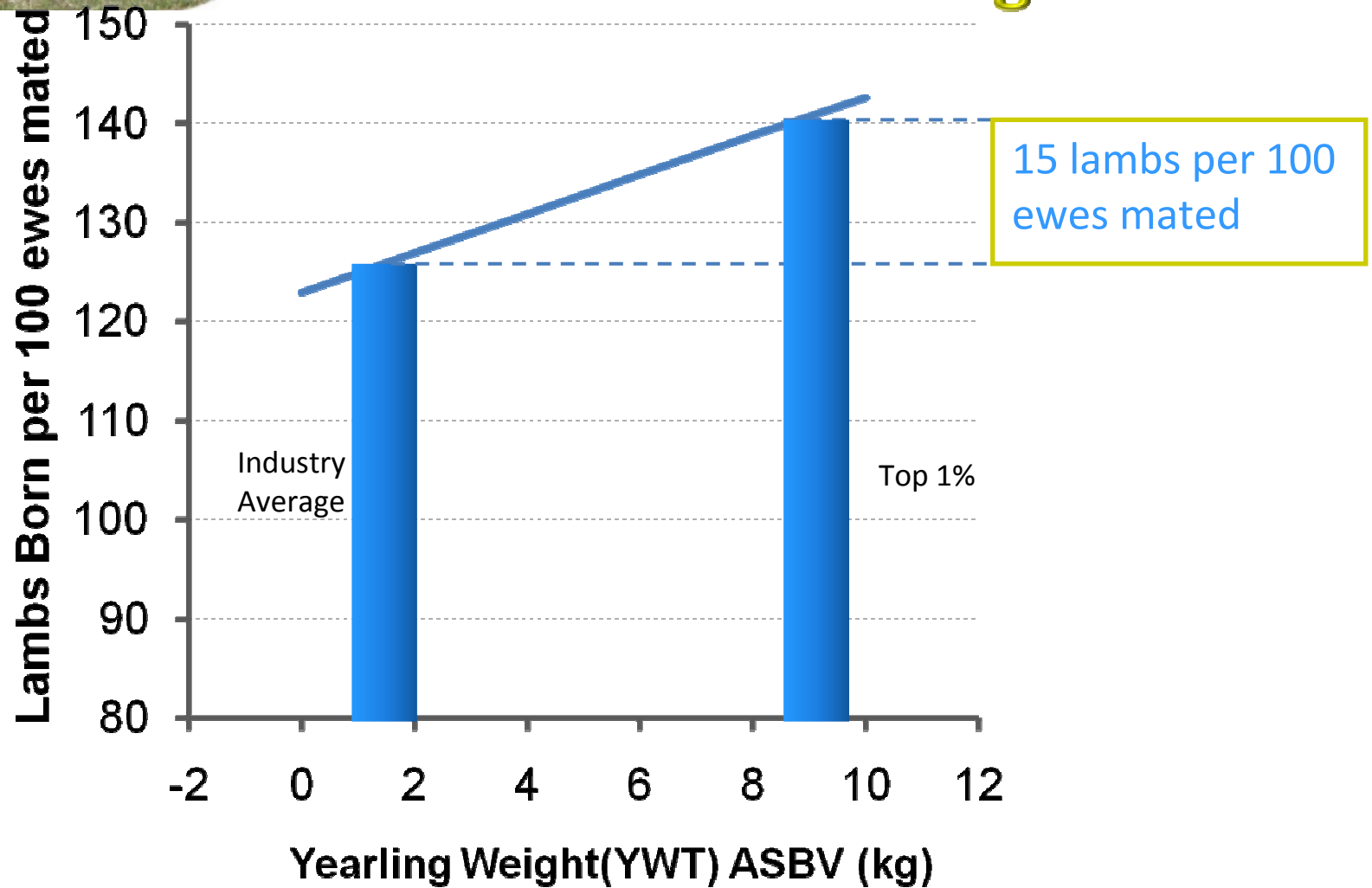
extra lambs are worth big bucks!!

	Lambs \$/kg	Ewes \$/head	Shippers \$/head	Value of an Extra Lamb
The Past	3.00	40	60	\$32
Current	5.10	90	120	\$62



Reproduction

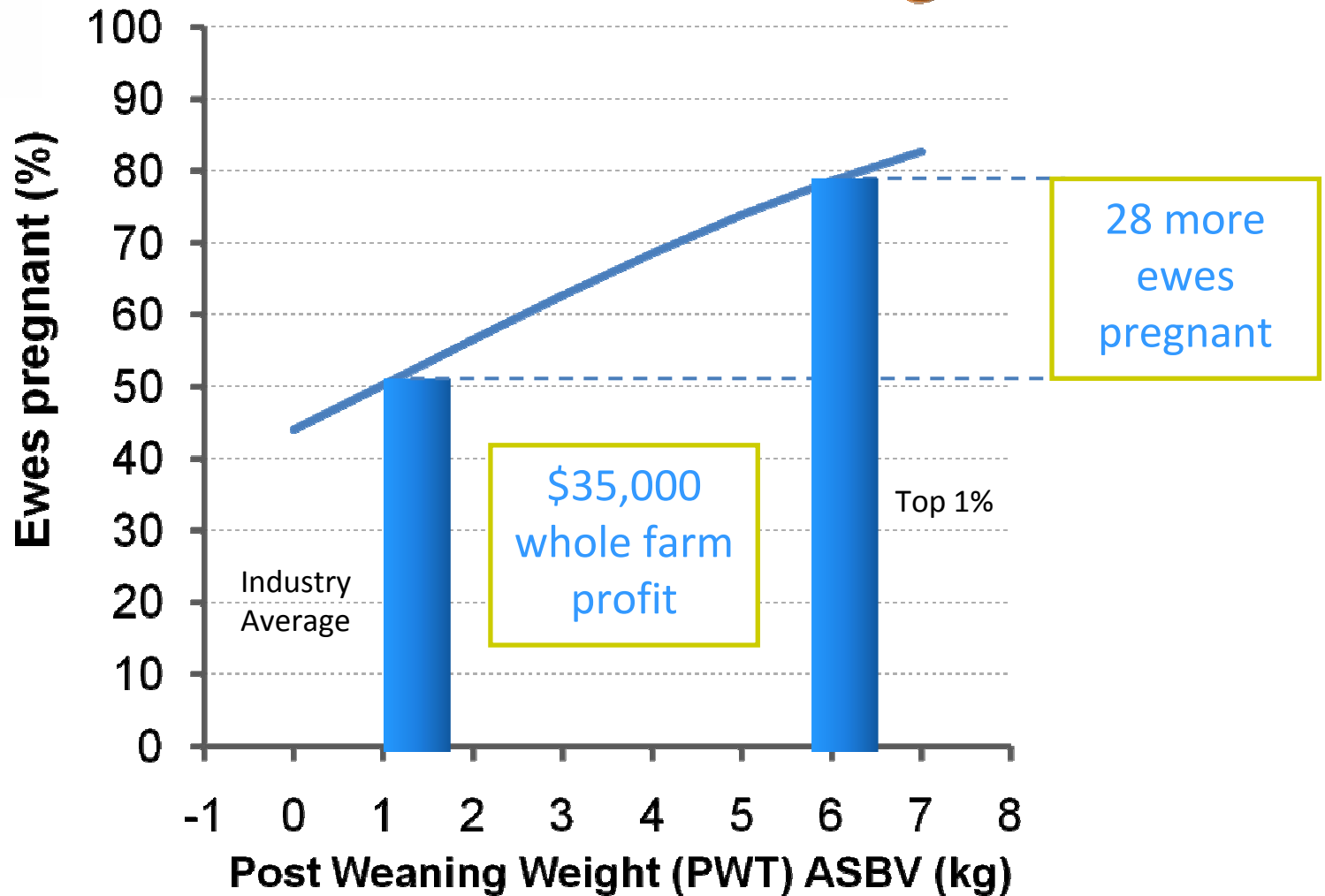
& growth





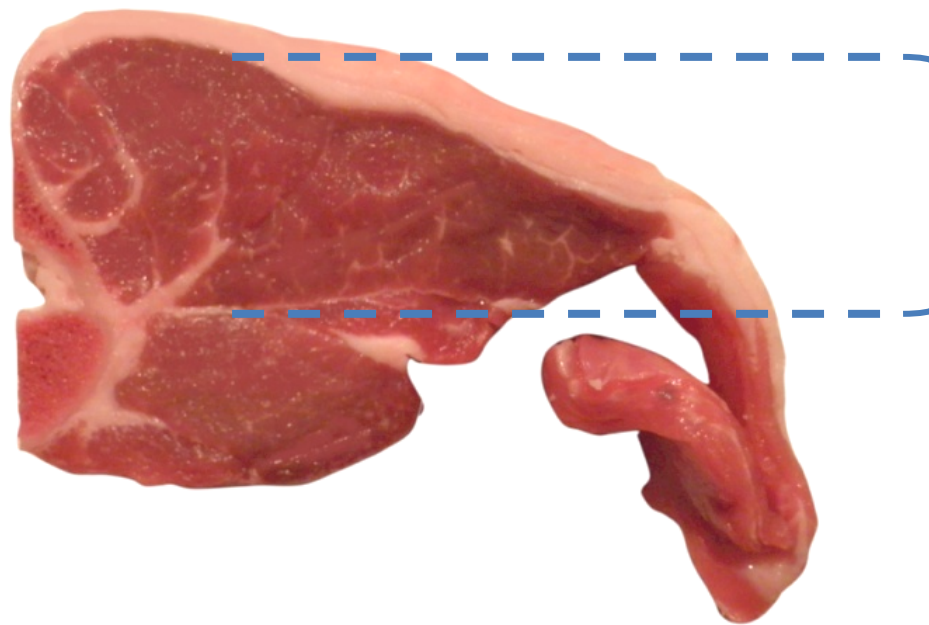
Growth

mating ewe lambs





Reproduction & muscling

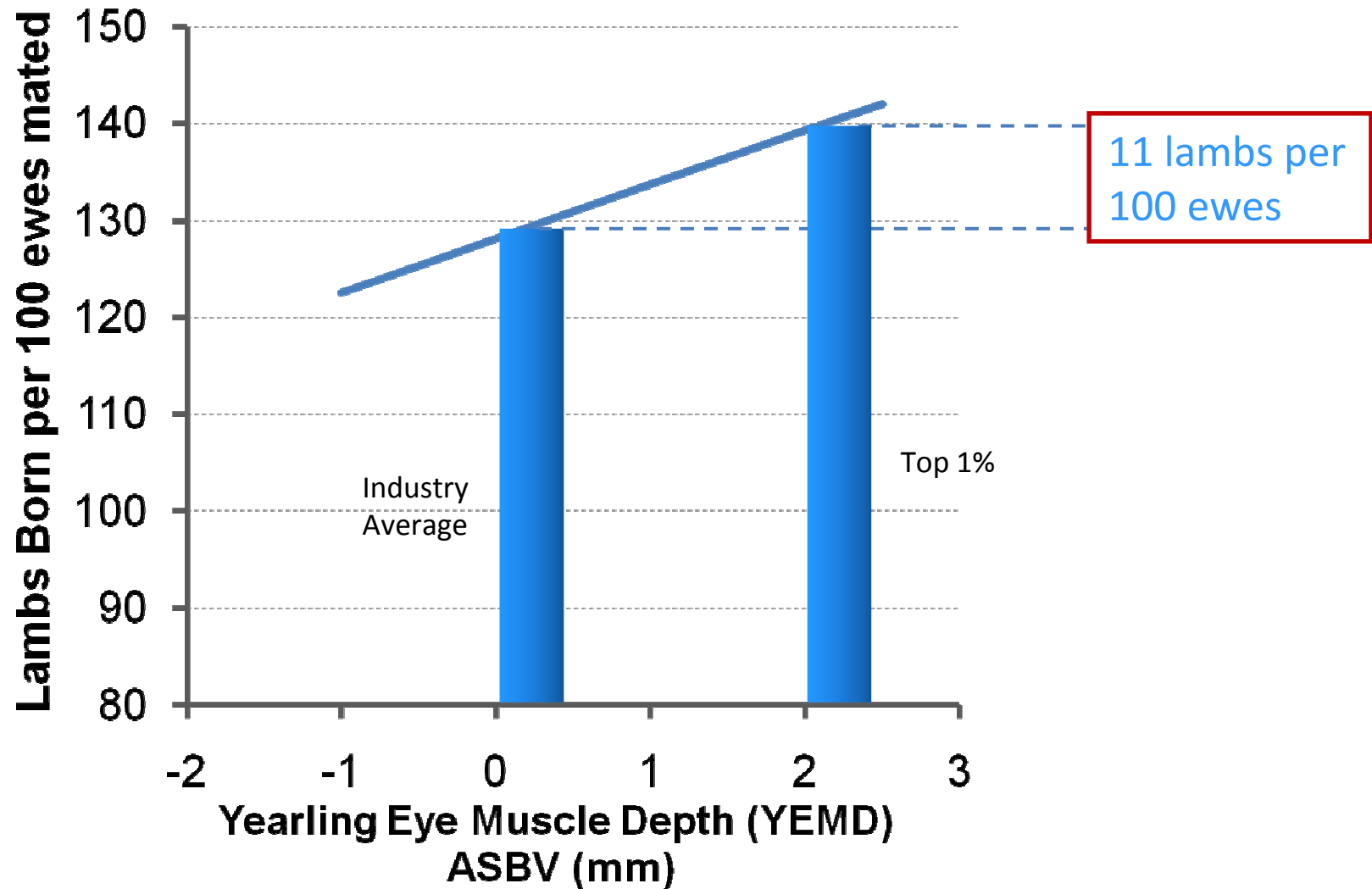


Eye Muscle Depth



Reproduction

& muscling





Wool



Easy Care



Wool



Easy Care



Wool

the valuable bi-product

	Ewe fleece value = \$25
Meat Price \$/kg	
\$3	
\$4	
\$5	



Wool

the valuable bi-product

	Ewe fleece value = \$25
Meat Price \$/kg	Extra lambs required to break even
\$3	
\$4	
\$5	



Wool

the valuable bi-product

	Ewe fleece value = \$25
Meat Price \$/kg	Extra lambs required to break even
\$3	>50
\$4	
\$5	



Wool

the valuable bi-product

	Ewe fleece value = \$25
Meat Price \$/kg	Extra lambs required to break even
\$3	>50
\$4	>50
\$5	



Wool

the valuable bi-product

	Ewe fleece value = \$25
Meat Price \$/kg	Extra lambs required to break even
\$3	>50
\$4	>50
\$5	37



Easy Care



Easy Care



Easy Care

Get rid of the optional extras:

- * Wrinkle
- * Wool on legs
- * Wool on heads
- * Horns
- * Dags



Easy Care

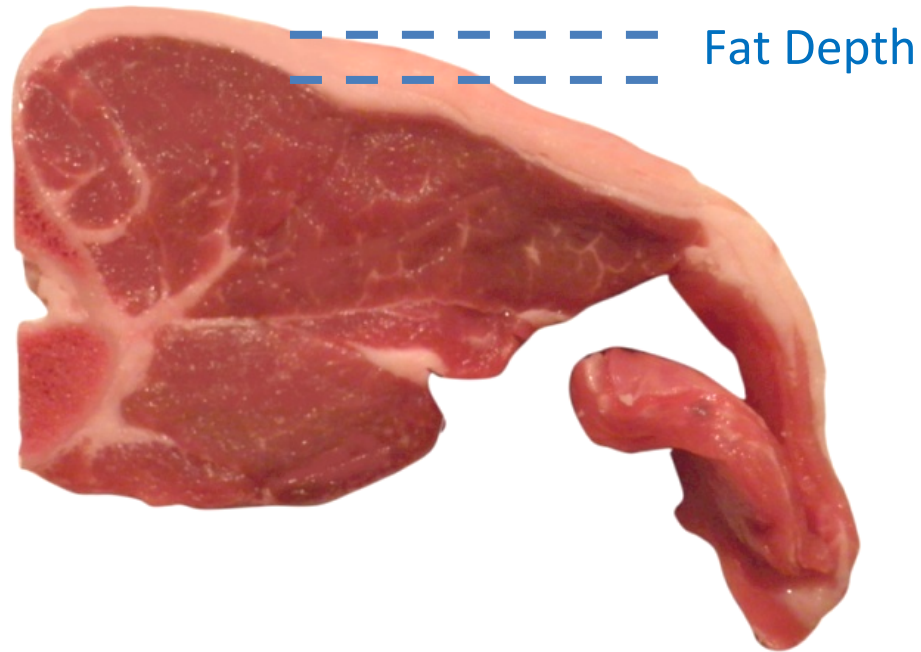
We are slow learners!!

- * Wrinkly sheep get struck more often – Belschner *et al.* 1930s
- * Wrinkly sheep have less lambs – Dun *et al.* 1960s
- * Woolly faced ewes have less lambs - Mullaney 1960s
- * Horns have to go – Ferguson *et al.* 2000s



Easy Care

& FAT





Easy Care

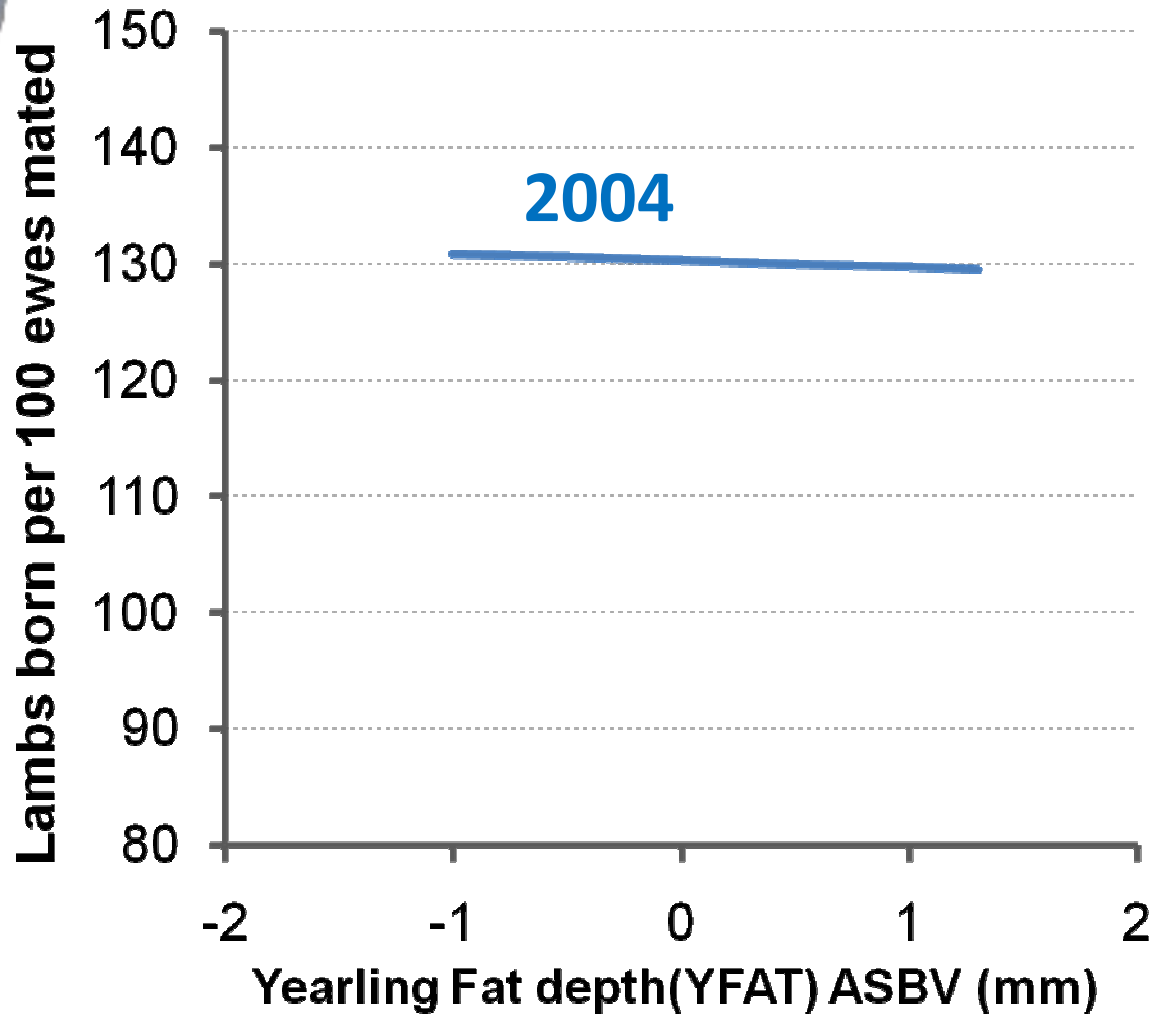
& FAT

**When times are tough
its good to be FAT...**



Easy Care

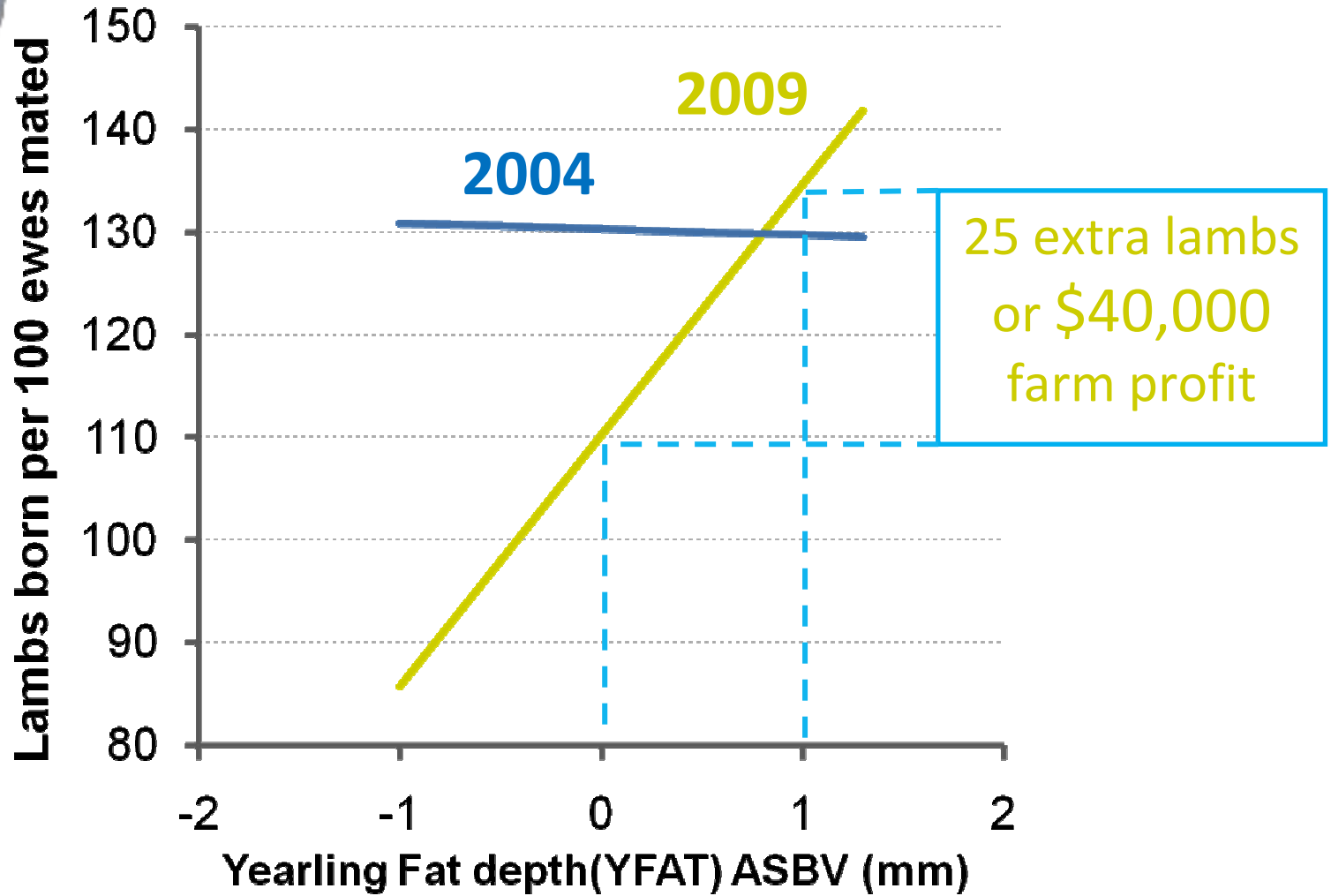
& FAT





Easy Care

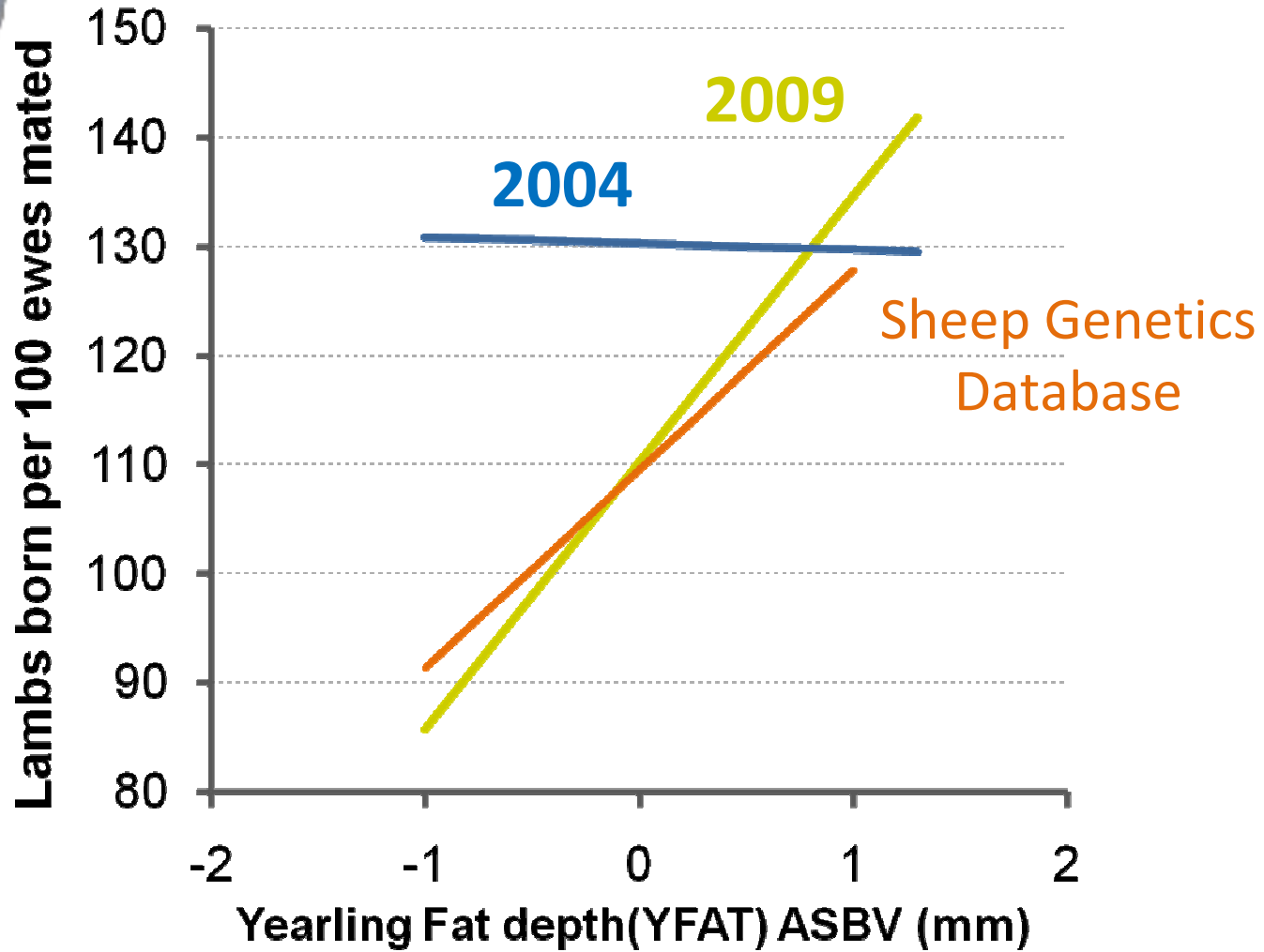
& FAT





Easy Care

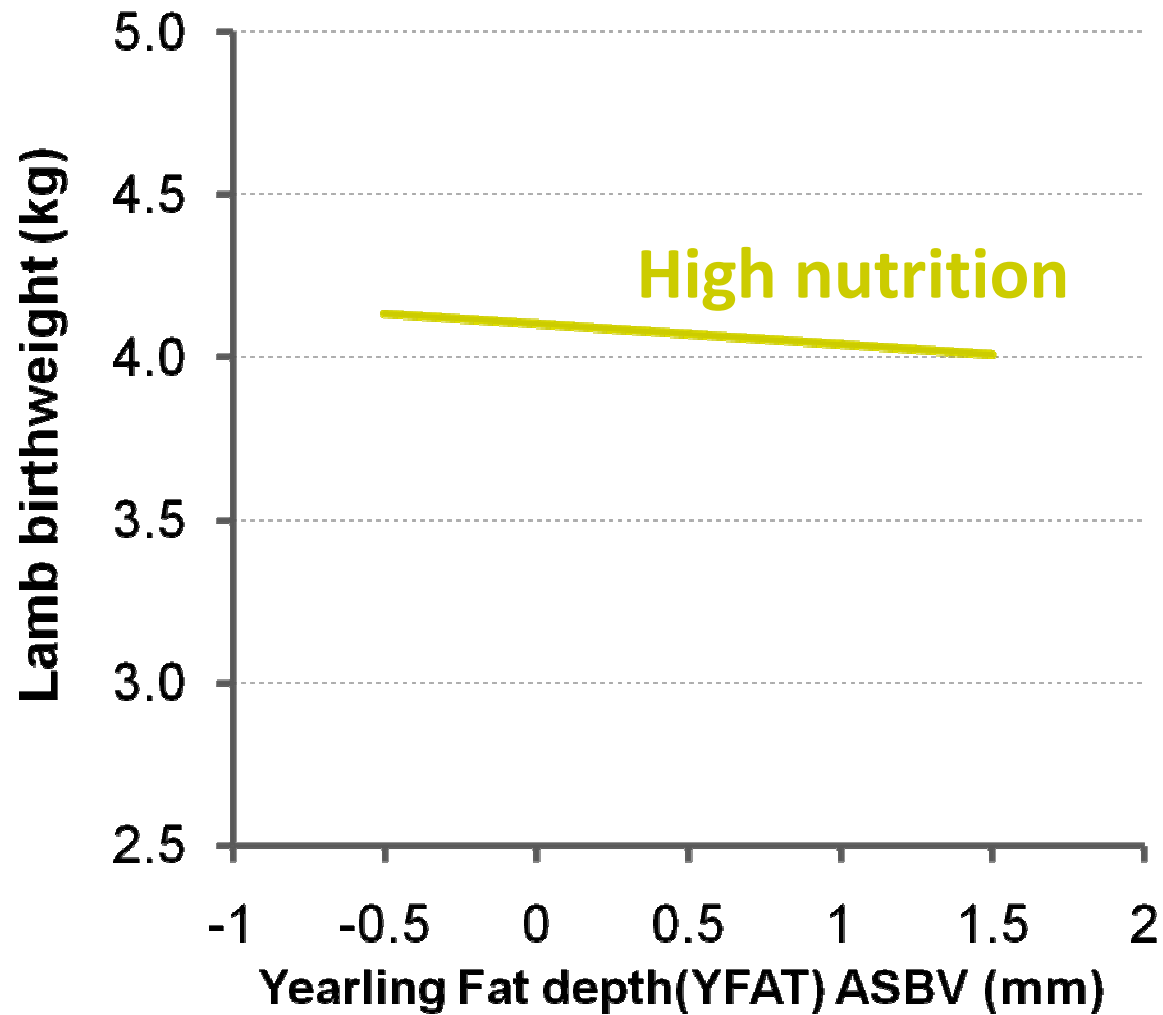
& FAT





Easy Care

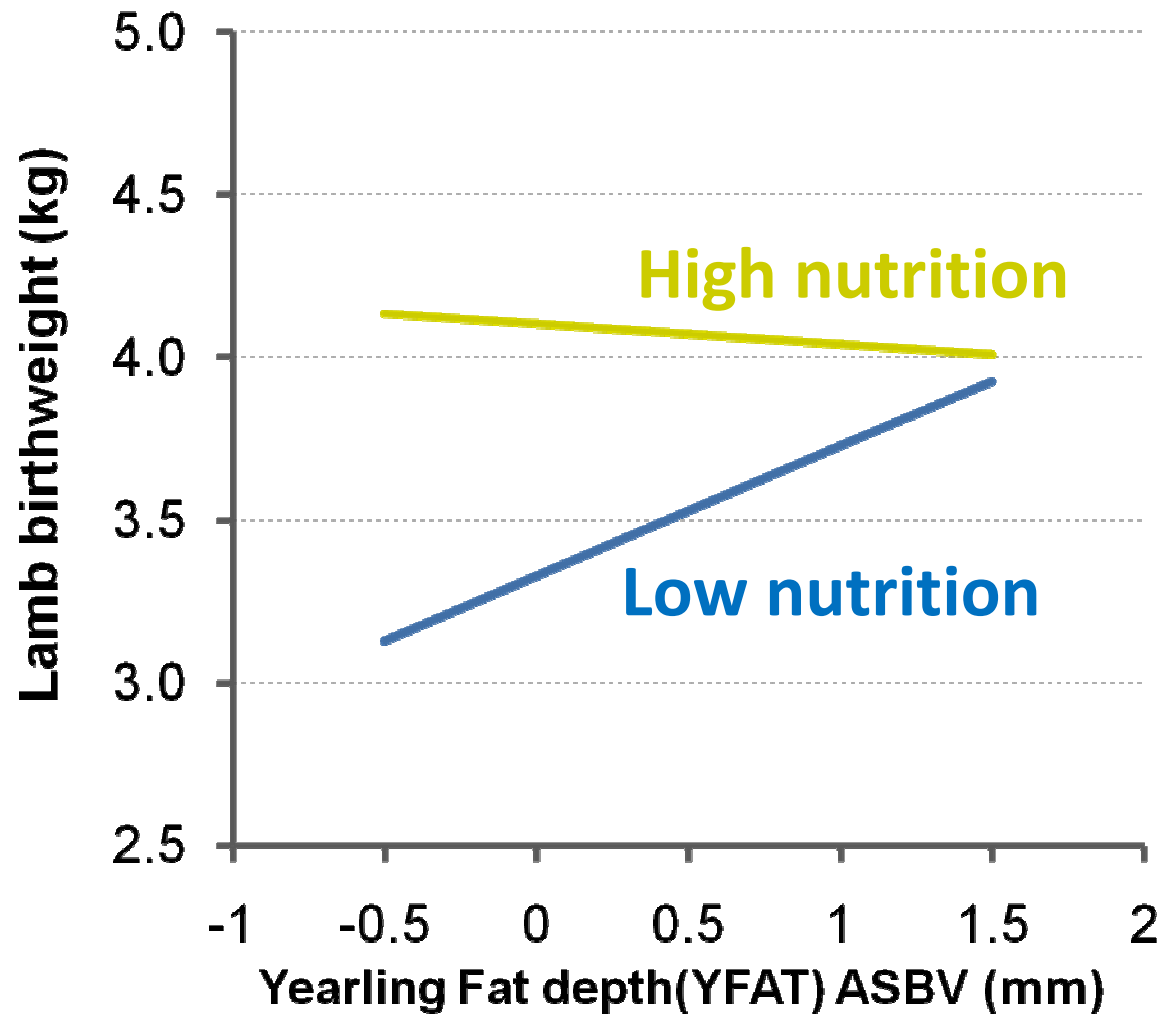
& FAT





Easy Care

& FAT



THE BLUE PRINT

- * Fertile at 7-8 months
- * Weaning heavy twins
- * Well muscled
- * Resilient to tough times
- * Wrinkle and dag free
- * Worm free
- * Polled
- * Bare head and legs
- * Quality wool



A photograph of two sheep in a field, with a white text box overlaid on the right side. The sheep are looking towards the right. The background shows a field with some trees and a fence.

The future is bright: **Future Park 099337**
Poll Merino, 30kg at weaning, 70kg at 10 months
and was 50 days pregnant with twins!

WWT: +5.1kg
PWT: +7.1kg
PEMD: +1.6mm
PFAT: +0.5mm

The logo for ASBV Merinoselect, featuring a stylized sheep's head in profile, with the word "MERINOSELECT" in a semi-circle above it and "ASBV" in large letters below it.

MERINOSELECT
ASBV

Acknowledgements:



Department of
Agriculture and Food



SHEEP CRC



MURDOCH
UNIVERSITY
PERTH, WESTERN AUSTRALIA



CSIRO